

CLEAN TOP



2025 COMPANY PROFILE
FOR PREQUALIFICATION



CONTENTS

1. INTRODUCTION
2. OVERVIEW
3. LOCATION
4. ROLE & RESPONSIBILITY
5. ORGANIZATION
6. TECHNICAL MANPOWER
7. ENGINEERING ACTIVITIES
8. CORE TECHNOLOGY
9. BUSINESS
10. QUALITY & VALUE MANAGEMENT
11. DESIGN SOFTWARE & TOOLS
12. SUSTAINABLE GROWTH

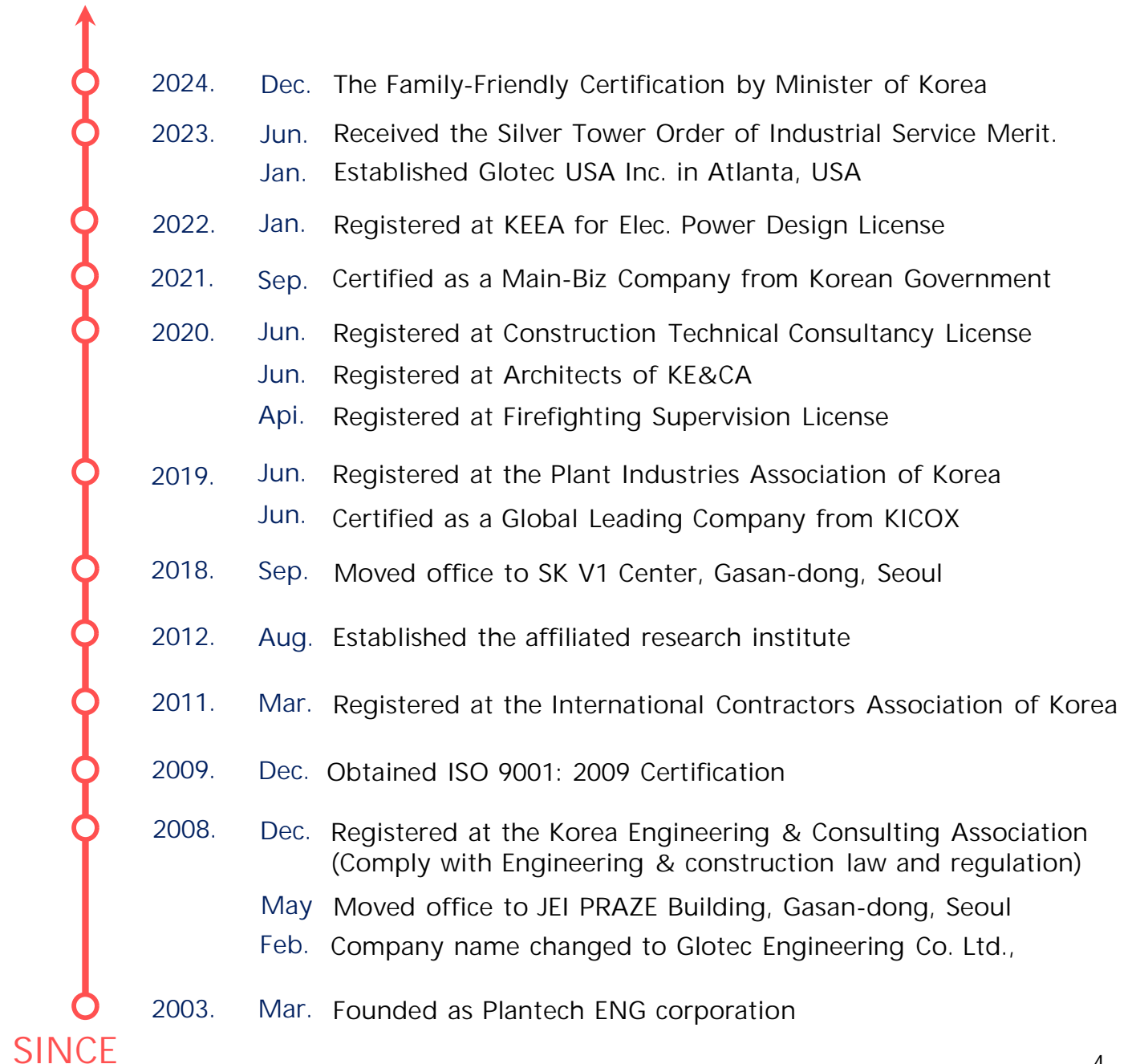
A lush green forest with tall trees and a mossy log in the foreground. The scene is filled with vibrant green foliage, including ferns and moss-covered logs, creating a serene and natural atmosphere. The background shows a dense canopy of trees with sunlight filtering through the leaves.

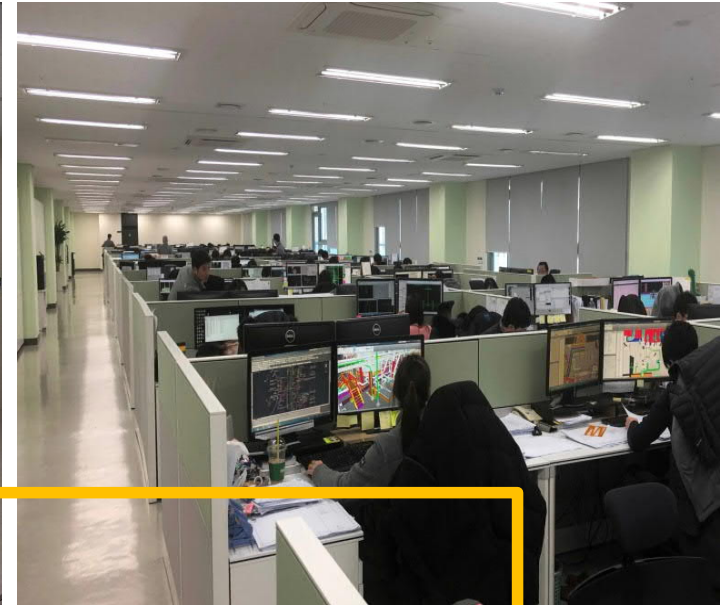
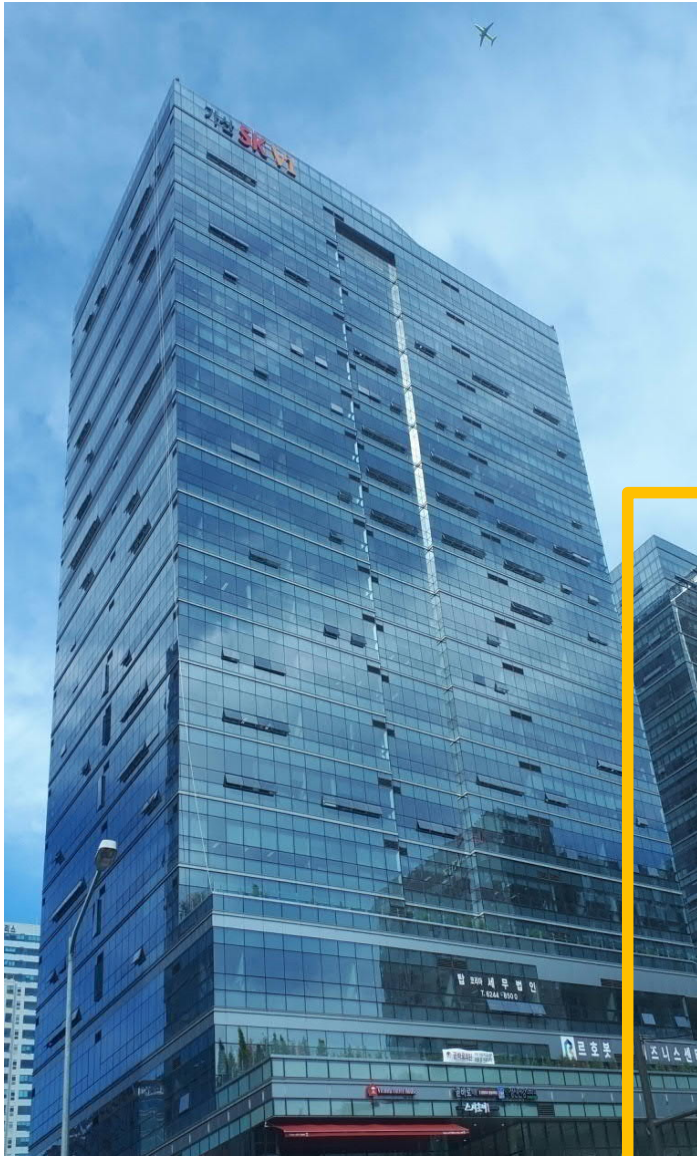
INTRODUCTION

Since its establishment in 2003, GLOTEC Engineering has been delivering comprehensive engineering services, including feasibility studies, basic design, detail engineering, procurement support, and field engineering with supervising works. GLOTEC Engineering provides these services to address client needs of various industries such as Oil and Gas, Energy, Power generation, Semiconductor and Industrial plant business.

Especially we are actively responding to customer needs based on the advanced engineering technology such as Smart 3D Modeling, BIM 4D & 5D design, and Reverse engineering using laser scanner in the virtual spaces. GLOTEC Engineering will continue to step forward and provide excellent engineering solutions that ensure customer satisfaction and trust.

OVERVIEW





Head Office

12~14th Floor, Gasan SK V1 Center
 171, Gasan Digital 1-ro, Geumcheon-gu, Seoul, Korea
 TEL : 82-2-6345-7000, FAX : 82-2-6345-7020

WEB : www.gteng.co.kr

EMAIL : gteng@gteng.co.kr

- 8,170 M² (87,940 square feet)
 600 Desks, 13 Meeting Rooms
- Number of Employees: 543



GLOTEC Digital Center

1745-1, Gwanyang-dong Dongan-gu,
Anyang-si, Gyeonggi-do, Korea
1~10 Floors, Glotec Digital Center Bldg.,
TEL : +82-2-6244-8315

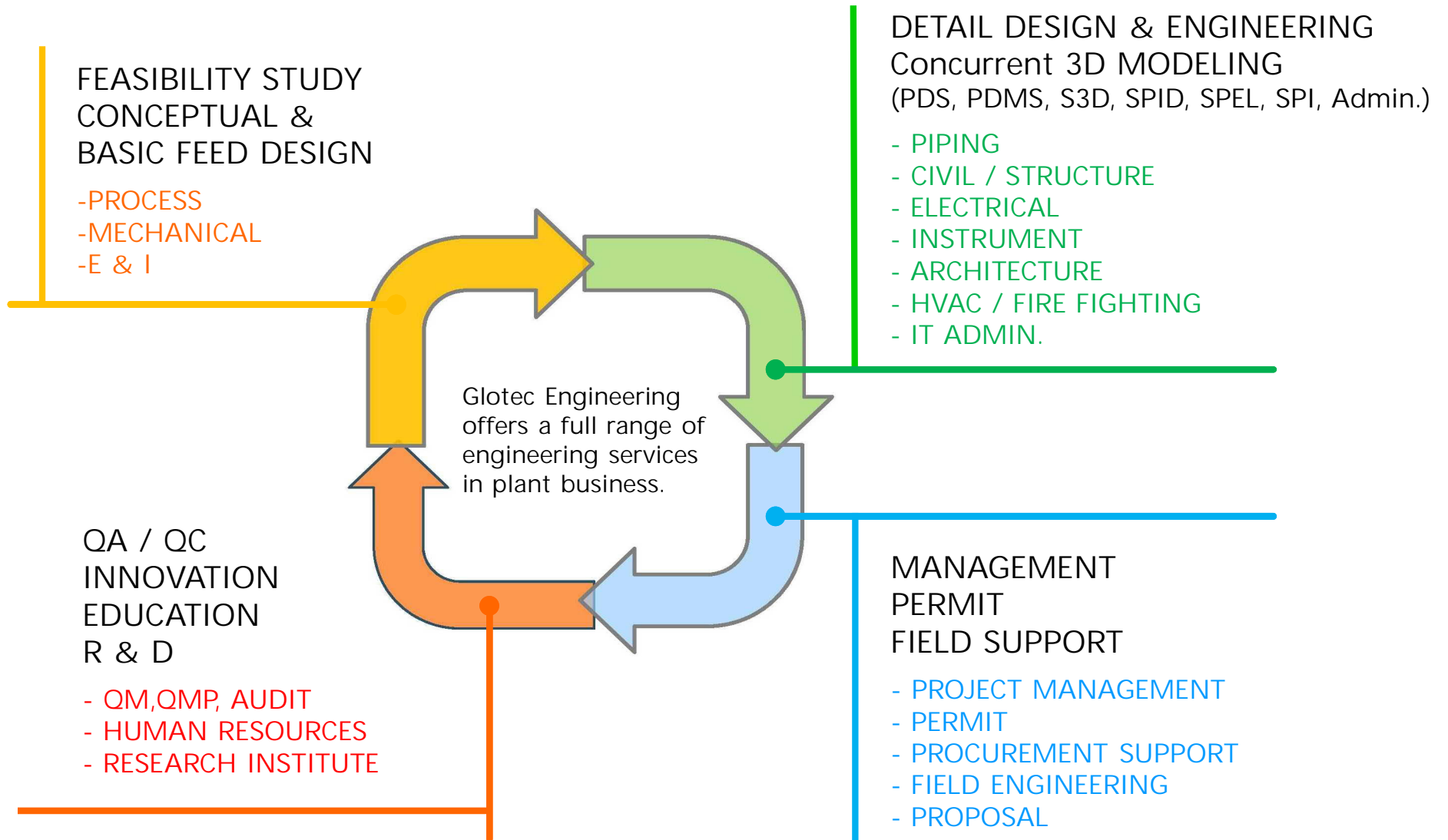
- Total Floor Area : 16,060 M2



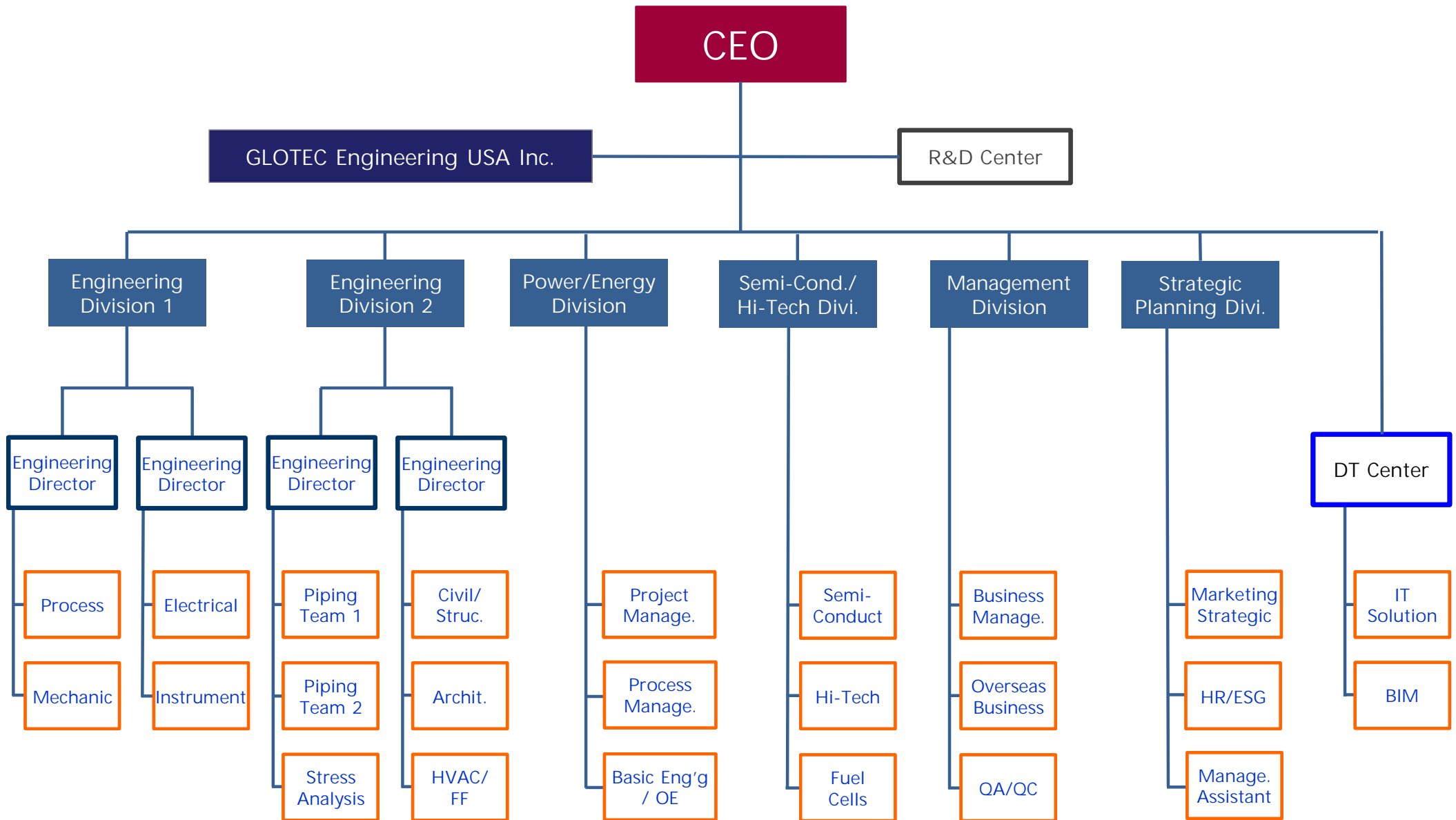
GLOTEC Engineering USA Inc.

- Tennessee Head Office :
5810, Shelby Oaks Drive Memphis, TN 38134, USA
- Kentucky Branch Office :
123 Webster Rdg Ct Vine Grove, KY 40175, USA
- Georgia Branch Office :
1180 Satellite BLVD NW, STE 200, Suwanee, GA 30024, USA
TEL : 470-915-0188

ROLE AND RESPONSIBILITY



ORGANIZATION





TECHNICAL MANPOWER

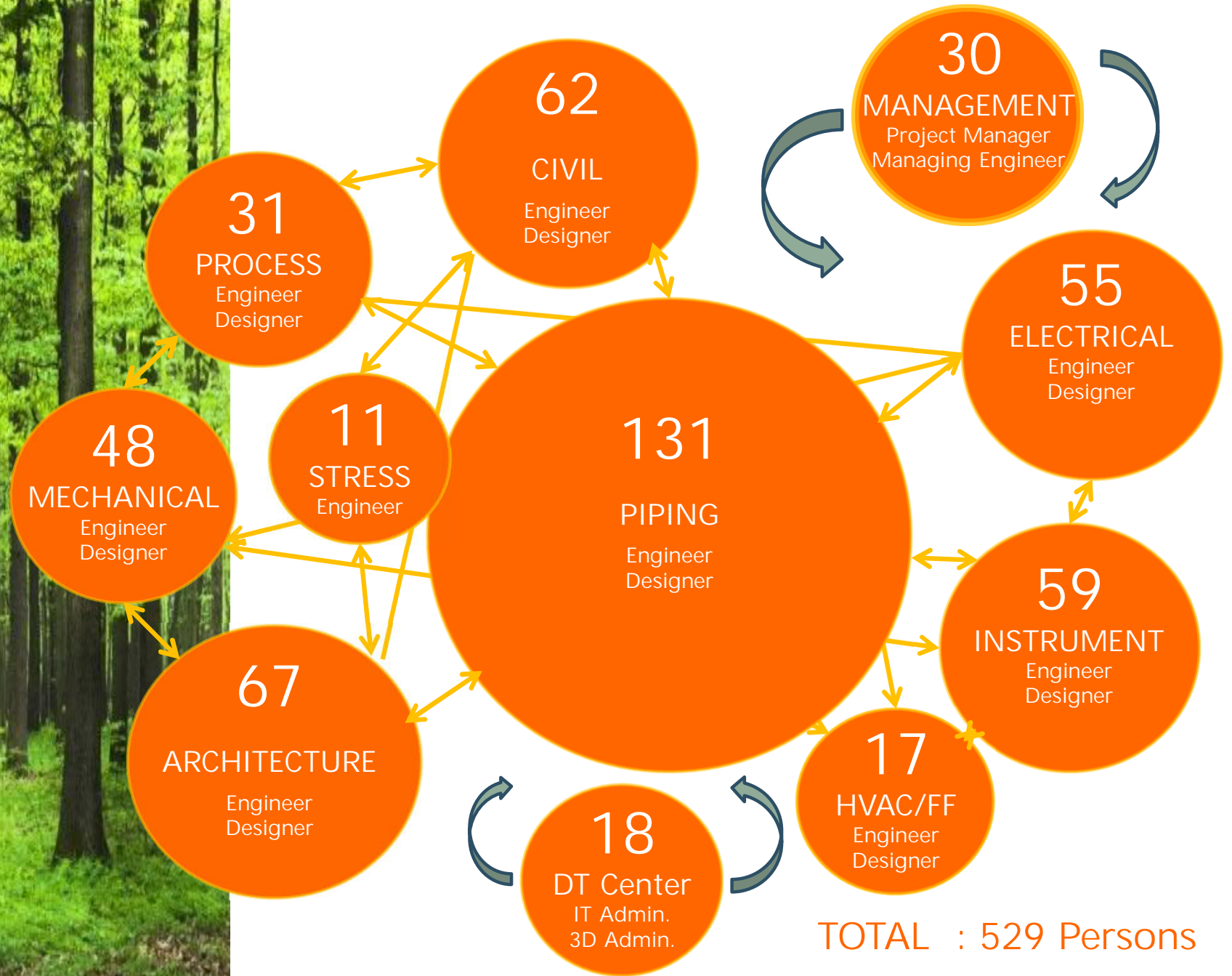
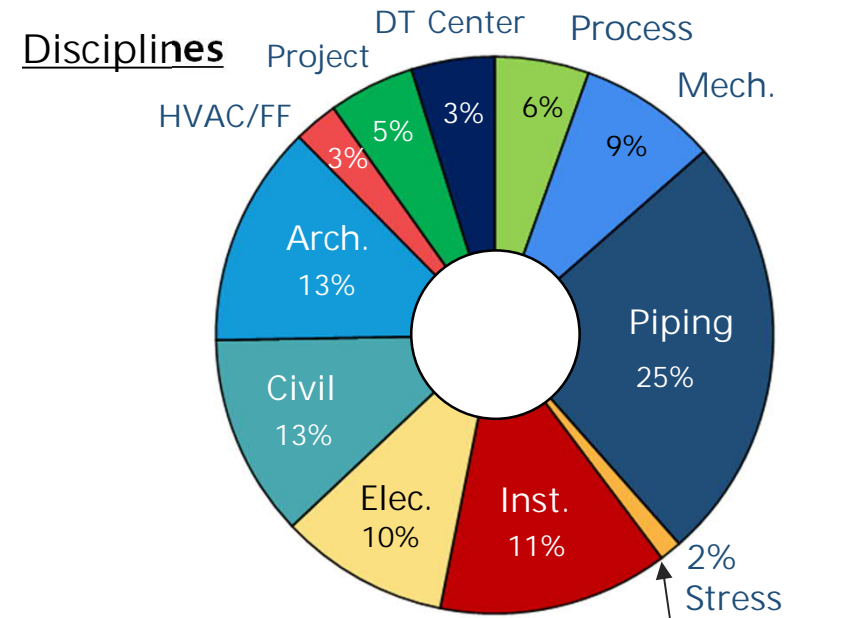


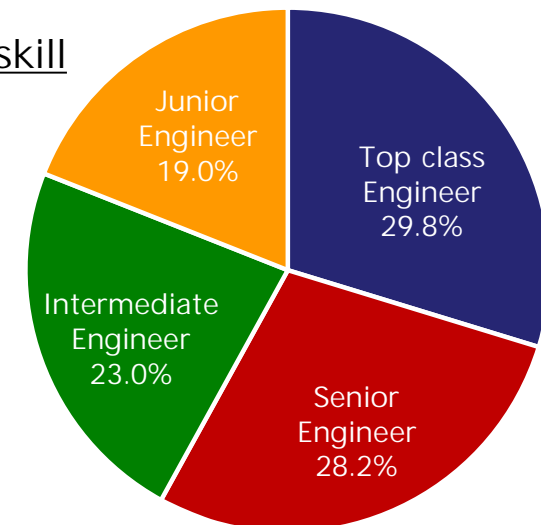
TABLE: TECHNICAL MANPOWER

Category	Top class Engineer	Senior Engineer	Intermediate Engineer	Junior Engineer	Total (P)
Process	12	4	6	9	31
Mechanical	21	12	10	5	48
Piping	46	47	27	11	131
Stress	2	5	2	2	11
Electrical	12	12	11	20	55
Instrument	19	18	14	8	59
Civil	15	21	18	8	62
Architecture	10	21	19	17	67
HVAC & F/F	1	5	3	8	17
Project Management	16	3	3	8	30
DT Center	4	1	8	5	18
Total	158	149	121	101	529

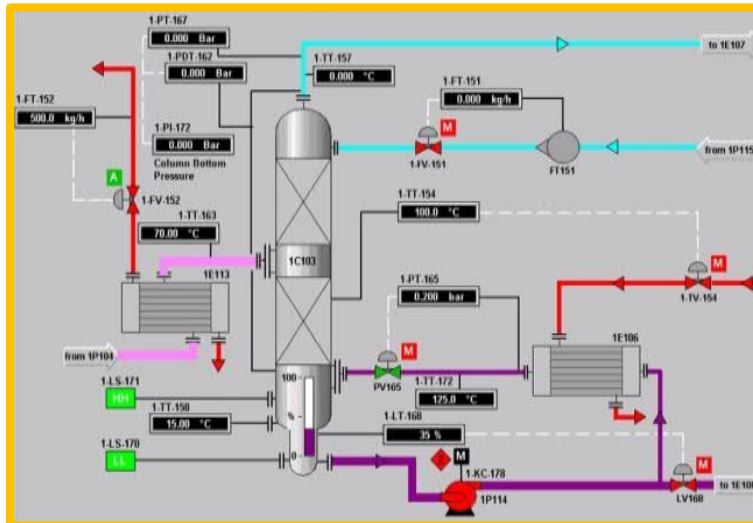
Total 543 (Include 14 Staffs)



Grades of Engineer skill



ENGINEERING ACTIVITIES



PROCESS

- Feasibility study , Conceptual, Basic & FEED Design and Engineering
- PFD and P&ID for Process and Utility
- Development & Update
 - P&ID, Piping line index, Tie-in list, Vendor data, Piping & Instrument Process Data Sheet (include Mech. etc.)
 - HAZOP Review and SIL Study
- Provide the intelligent P&ID (SPPID)

MECHANICAL (Static & Rotating)

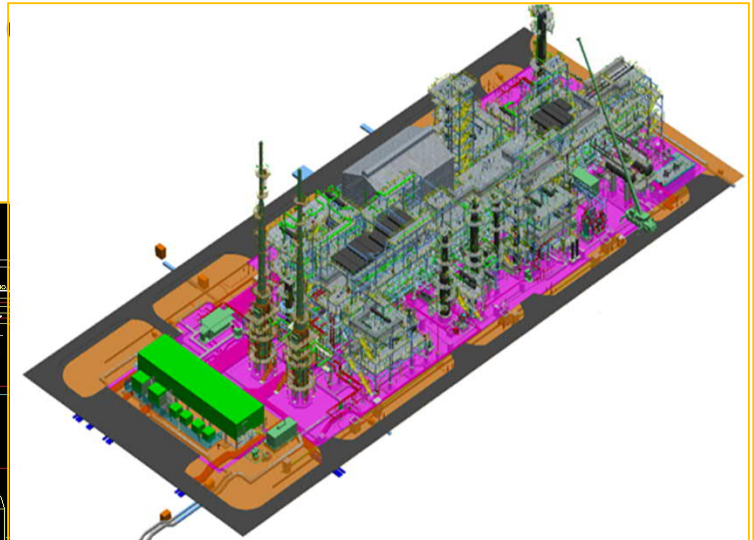
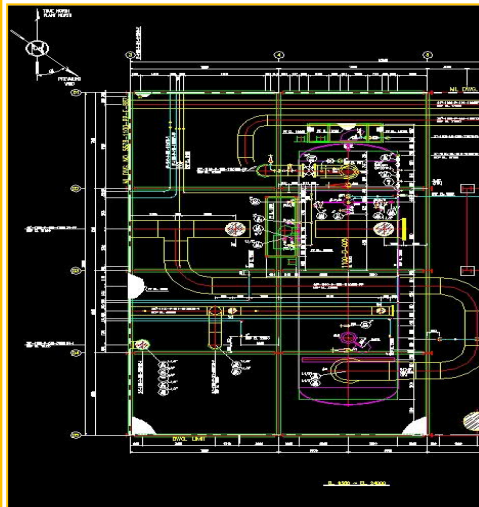
- Engineering drawings include calculation
- Detail design of Rotating, Stationary & Package Equipment
 - Vessels, Storage Tanks, Heat exchangers and Pumps etc.,
- Procurement services
 - Equipment data sheets
 - Material requisition (RFQ)
 - Technical clarification & Bid evaluation (TBE)
 - Review & approval of Vendor prints
 - Expediting and Schedule control
- Assistance on Fire Fighting & HVAC equipment design





PIPING

- Plot plan
- Equipment location plan with routing study
- Provide the General Arrangement Drawing (GAD)
- Design the Piping plans & elevations
- Procurement service for Piping materials (MR,TBE)
- Piping support drawing and piping material handling
- Piping detail drawing and information for all disciplines
- 3D Modeling with PDS, PDMS, S3D, BIM including all Equipment
- Extract Plot Plan, ELP, GAD & ISO drawing and BM take off
- Perform the Stress analysis
- Field engineering





ELECTRICAL

- General & Specification
 - Engineering supervision & coordination
 - Electrical equipment specification
 - Electrical equipment data sheet
- Procurement service works
 - MR/TBE/PS for electrical items
 - Review and approval vendor print
- System calculation
 - Short circuit calculation
 - Load flow and voltage drop studies
 - Large motor starting study
 - Protective relay coordination
- Design & preparation of electrical drawings
 - Single line & schematic diagrams
 - Hazardous area classification
 - Power lighting, grounding layout
 - Fire alarm & telecommunication layout
 - Load analysis / cable schedule
 - 3D Modeling (PDS, PDMS, S3D, BIM, SPEL etc.) ..)
- Field Engineering

INSTRUMENT

- General & Specification
 - Engineering supervision & coordination
 - Instrument specification
 - Instrument data sheets
 - Engineering study & review
 - Control system design

- Procurement service works
 - MR/TBE/PS for instrument items
 - Review and approval vendor print

- Provide the instrument detailed designs
 - Instrument index
 - Instrument logic, loop & junction box wiring diagram
 - Instrument signal wiring & cable tray layout
 - 3D Modeling (PDS, PDMS, S3D, BIM, SPI etc.,)

- Field Engineering





CIVIL / STRUCTURE

- Site preparation
- Drainage , Road & Paving
- Pipe Rack Structure design
- Equip. Structure w/ FDN. design
- Dynamic loaded foundation design
- Basin & Pond structure design
- Pile system and Soil retaining structure design
- 3D Modeling (PDS, PDMS, S3D, BIM, Tekla etc.,)
- Equipment foundation design with calculation
- Shop fabrication drawing review
- Field Engineering

ARCHITECTURE

- Engineering for Offices, Warehouses, Control buildings, Substations and Guard houses, etc. in oil & gas plants
- Engineering for FAB, CUB, Warehouses and WWT buildings etc. in semiconductor & industrial plant
- Engineering for Turbine buildings, pump house, etc. in power plant
- Calculation and Analysis for Arch. engineering
- Construction work supervision
- Domestic project permits and reporting
- 3D Modeling (PDS, PDMS, S3D, BIM etc.,)
- Field Engineering



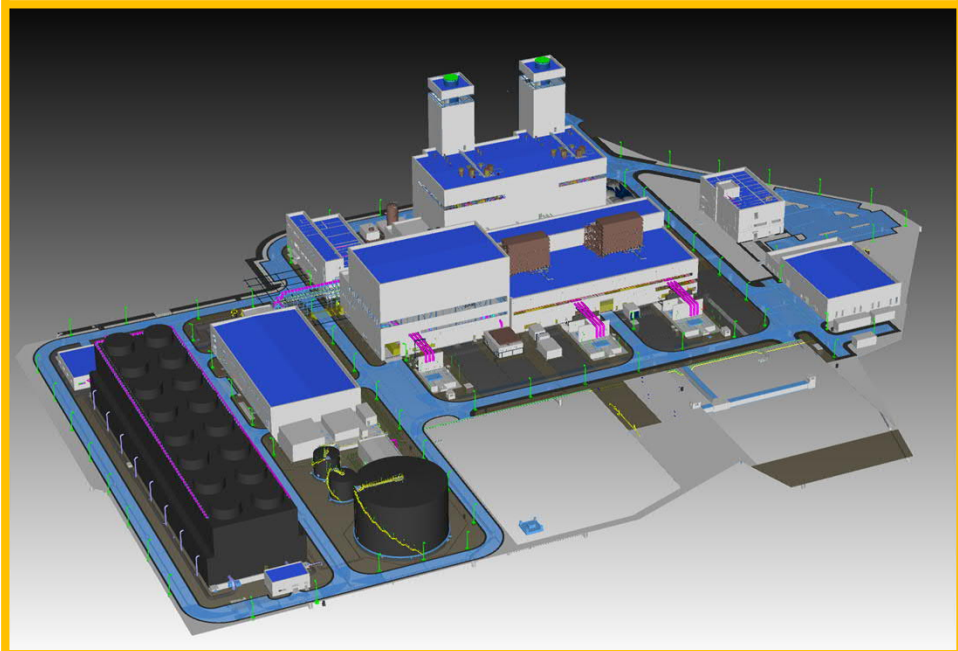


HVAC · Fire Fighting

- Specification & Data Sheet
- HVAC, F/F & Plumbing Equipment schedule
- HVAC, F/F & Plumbing Flow Diagram
- Layout Plan & Piping Design
- HVAC, F/F & Plumbing Control System
- Bill of Materials
- Calculations
- 3D Modeling (PDS, PDMS, S3D, BIM, etc.,)
- Permits for Fire Fighting
- Procurement Support (MR, TBE)

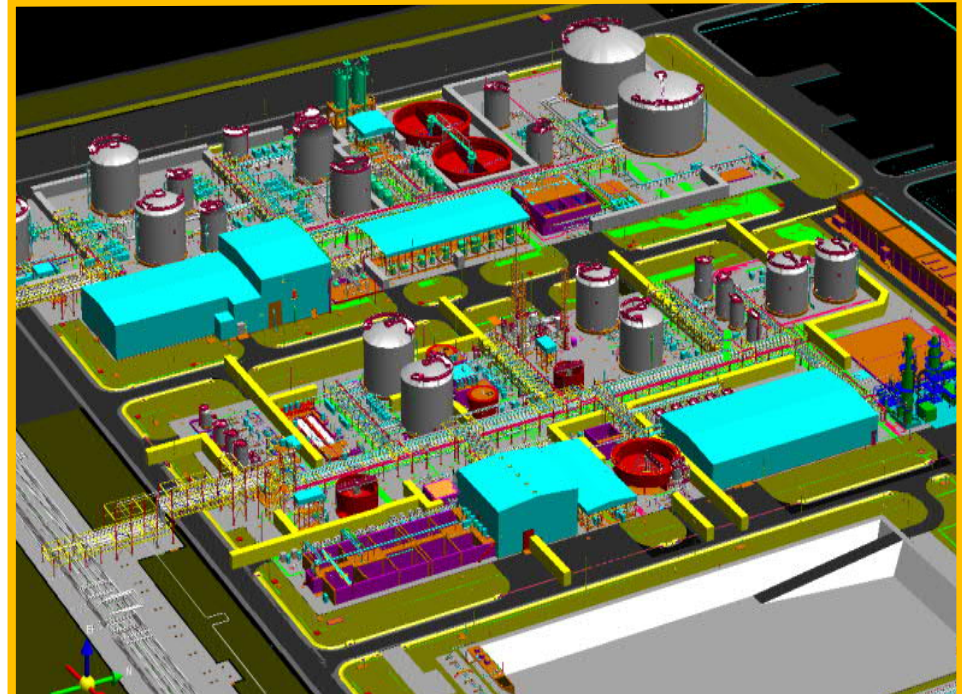
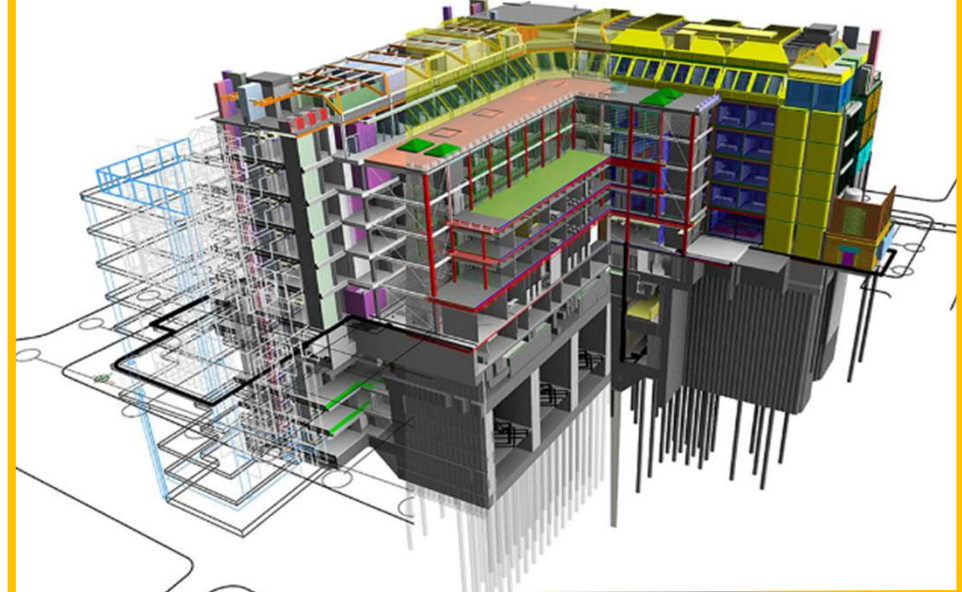
POWER & ENERGY

- Proposal, Basic Design & Environment Impact Assessment
- Process & Mechanical Design Criteria , Engineering Detail Schedule & PFD (Heat & Water Balance)
- MR, TBE, Technical Specification and Procurement Support
- Engineering & Design for GTG, HRSG, GOV, WT and WWT, Aux. Buildings, Vendor Package etc.,
- Field Engineering & Construction work supervision
- Project permits and reporting
- 3D Modeling (PDS, PDMS, S3D, BIM, etc.,)



DT CENTER

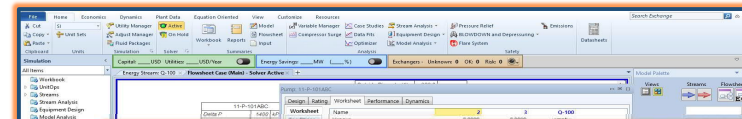
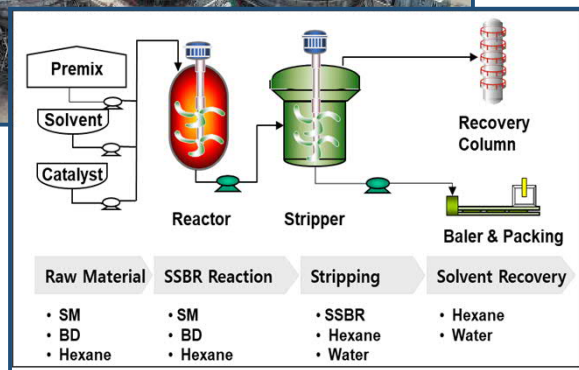
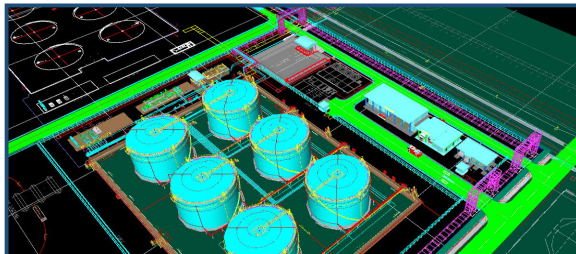
- Assist for Concurrent 3D (PDS,PDMS,S3D,BIM) Operation
 - ✓ Smart Plant Suite (SP3D, SPPID, SPI, SPEL, Admin.)
 - ✓ 2D Extraction Set up (Plot Plan, ELP, GAD etc.,)
 - ✓ Isogen. Set up & Trouble shooting
 - ✓ Clash Report & Data Back up
 - ✓ MTO Extraction Set up
 - ✓ 3D Model Review Set up (SPR, Navisworks)
 - ✓ Tekla program (Steel Structure) Back up
- Software & Hardware System & License Management
- D/B Server Set up
- BIM Admin.
- Drawing Format Set up
- Support for Vendor Package 3D Model Import
- Assistance on As-Built 3D Model Issue



CORE TECHNOLOGY I

Basic Engineering

The expert engineers at GLOTEC Engineering have a diverse range of experience and technical skills in refinery, petrochemical, and fine chemicals. We utilize Steady-State & Dynamic Simulations to perform design and engineering works, and we offer total engineering solutions to clients, from Basic engineering, Feasibility studies and Front-end engineering design (FEED) to Detail design that prioritizes safety and optimization.



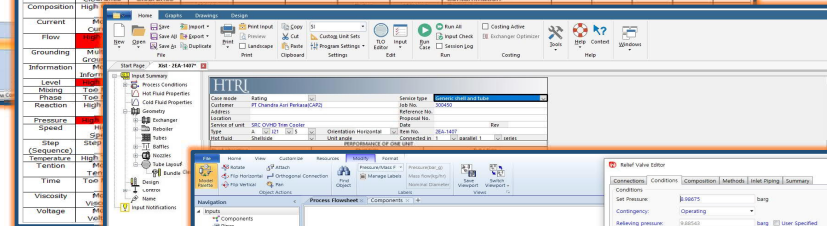
HYSYS

HAZOP Deviation Matrix

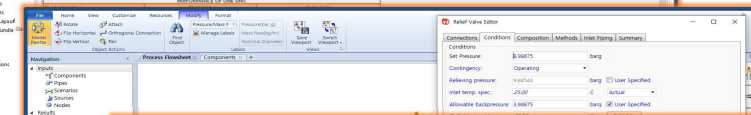
NOTE: To be Checked, Minor Risk but Negligible Factor, White: Not Applicable

Process Variables	Guide Word			Part Of	As Well	Other	Process Variables	Guide Word			
	More	Less	None/No					More	Less	None/No	Reverse
Action (Operator)	More	Less	None/No	Reverse	Part Of	As Well	Other	Wrong Action	Abnormal Condition	Abnormal Operation	Circuit Breakers
Addition	Too Much	Too Little	Balance						Clearance	Condemnation	
Agitation	More	Less	Clearance								
Composition	High	Low									
Current	High	Low									
Flow	High	Low									
Grounding	High	Low									
Information	High	Low									
Level	High	Low									
Pressure	High	Low									
Speed	High	Low									
Temperature	High	Low									
Time	Long	Short									
Viscosity	High	Low									
Voltage	High	Low									

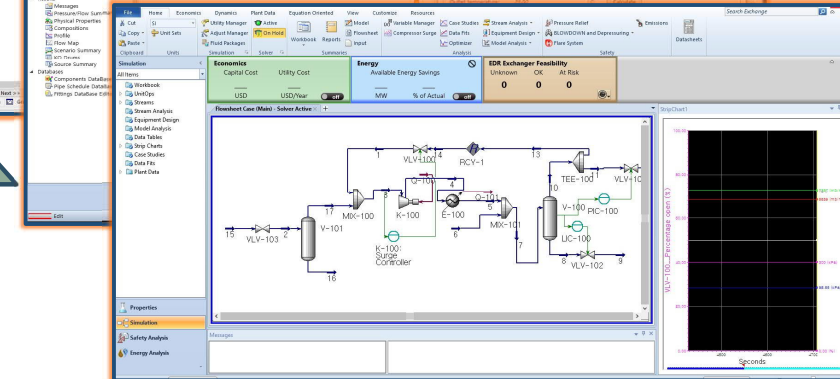
HAZOP Review



HTRI/Hydraulic



SIL Development



Optimization

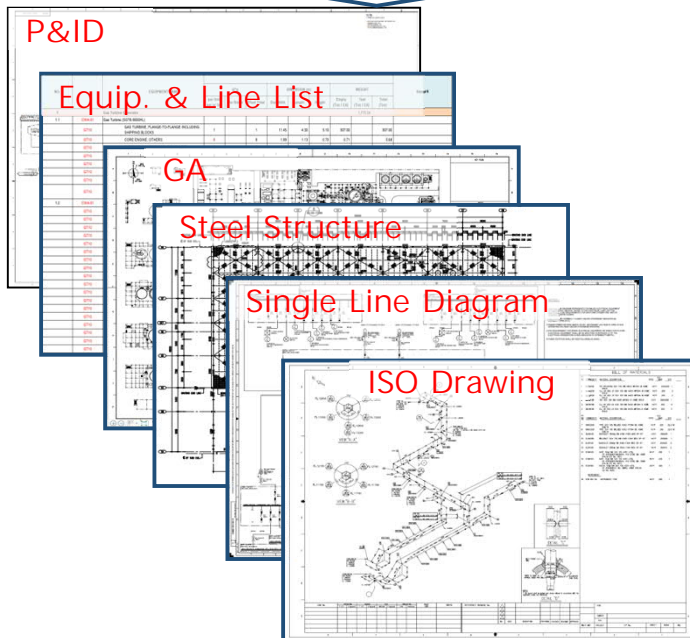
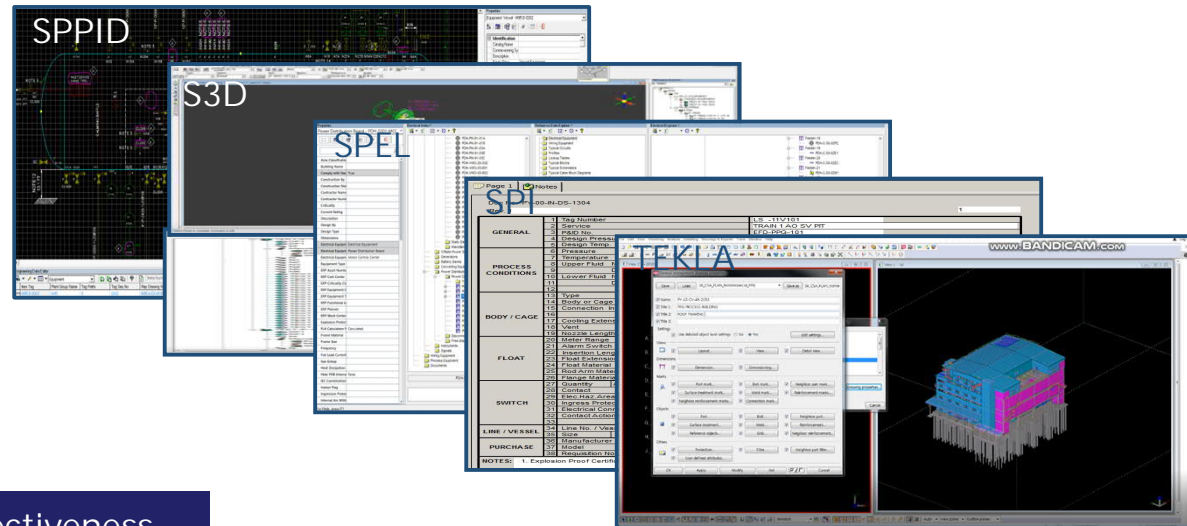
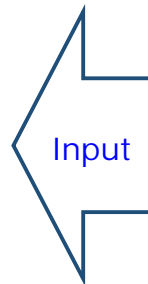
CORE TECHNOLOGY II

Concurrent 3D Technology

Glotec Engineering performs concurrent 3D design using Smart 3D technology, which goes beyond existing solutions such as PDS and PDMS. To maximize reliability and efficiency, all deliverables are produced using SPPID, S3D, SPEL, SPI and TEKLA, which share data through DT solutions.

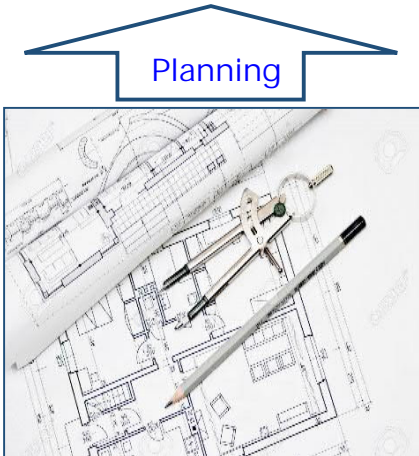


Deliverables



Effectiveness

- Less & avoid re-work (3D Modeling without pre-2D work)
- Gap Filling between each steps
- Real time Clash Check
- Buildup Data base
- Reducing Delivery Schedule
- Minimize Error & Revision



Planning

CORE TECHNOLOGY III

BIM – Building Information Modeling Technology

Glotec Engineering specializes in plant design utilizing BIM technology in the high-tech industries such as semi-conductor and fuel cells. With optimized IT administration support, we apply BIM for design, procurement and construction to ensure customer satisfaction.



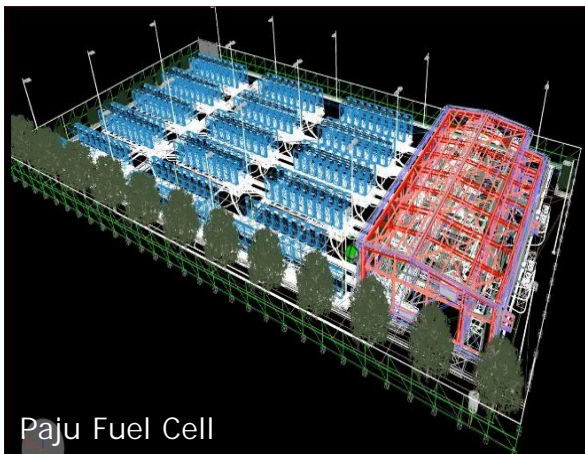
Power Plant

- Architecture
- Building

Application of BIM Function

- Schedule Management
- Buildup Admin.
- QA/QC : Minimize Design Errors
- SPEC. & Module design
- Field Support & Assist

- ❖ Development & Application of BIM Admin. (Family Construction, Library, Specification D/B)
- ❖ Clash Check & Close out
- ❖ Project Schedule compression
- ❖ MTO Extraction
- ❖ 2D Drawing Format Set up & Extraction
- ❖ Field Construction Assistance

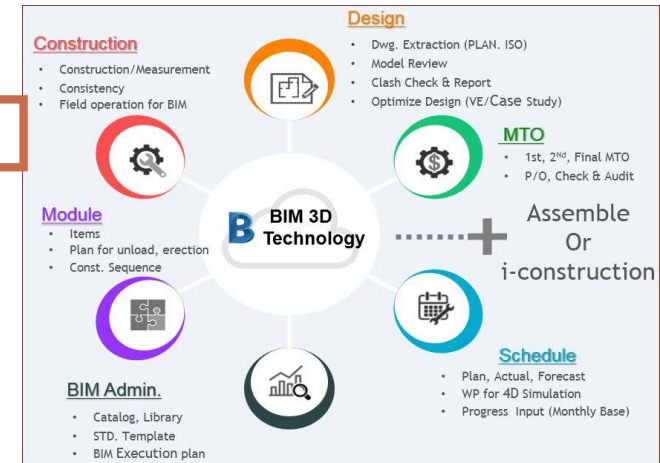


Fuel Cells

- Civil, Architecture
- Piping, E&I, HVAC

Hi- Tech

- Civil, Structure
- Piping, E&I, HVAC

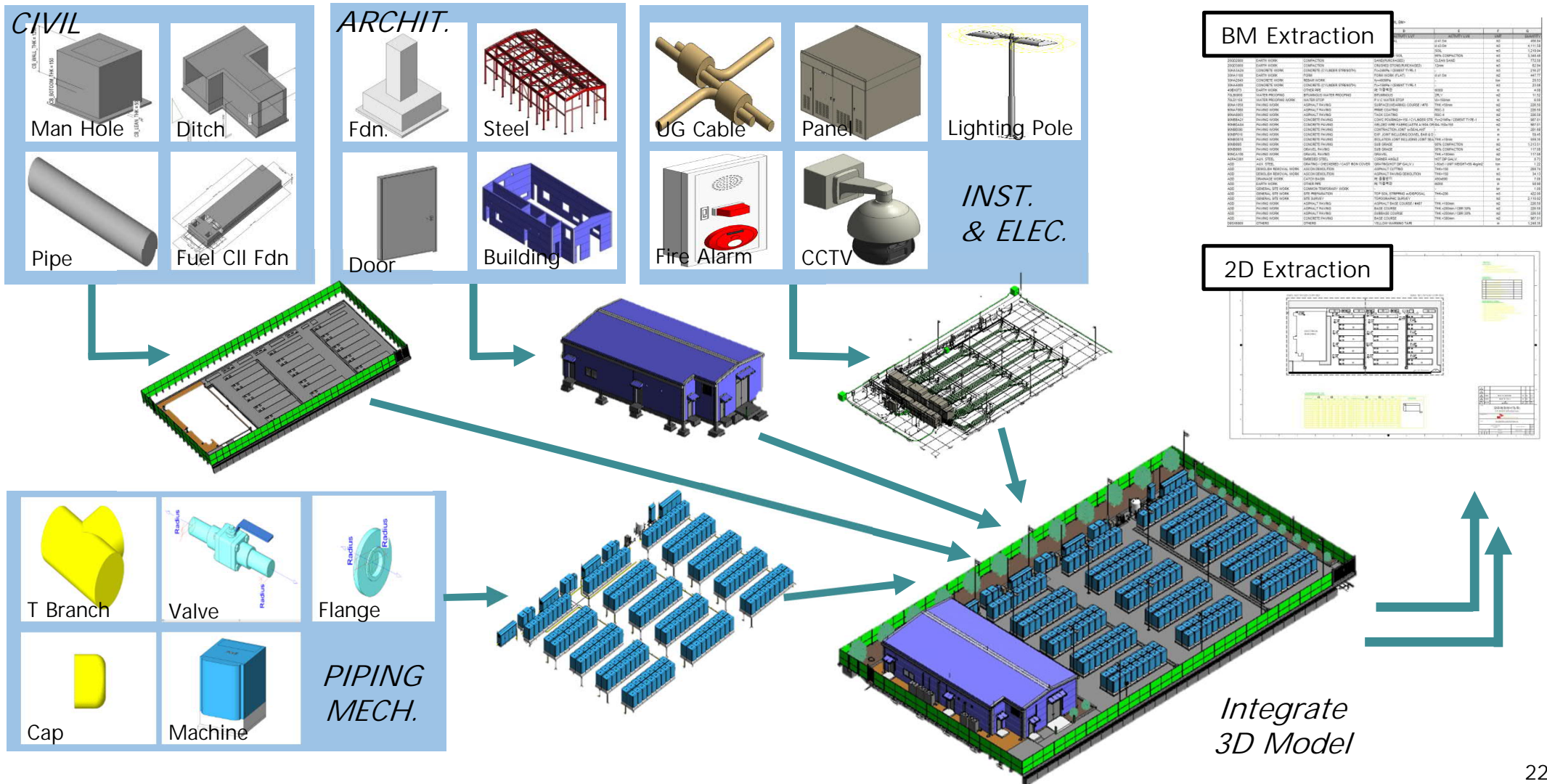


Icheon Hynix

CORE TECHNOLOGY III

BIM – Building Information Modeling Technology

Glotec Engineering has developed an exclusive BIM administration technology. To achieve more efficient design, we apply this technology to 3D modeling for automatic material takeoff and 2D drawing extraction.

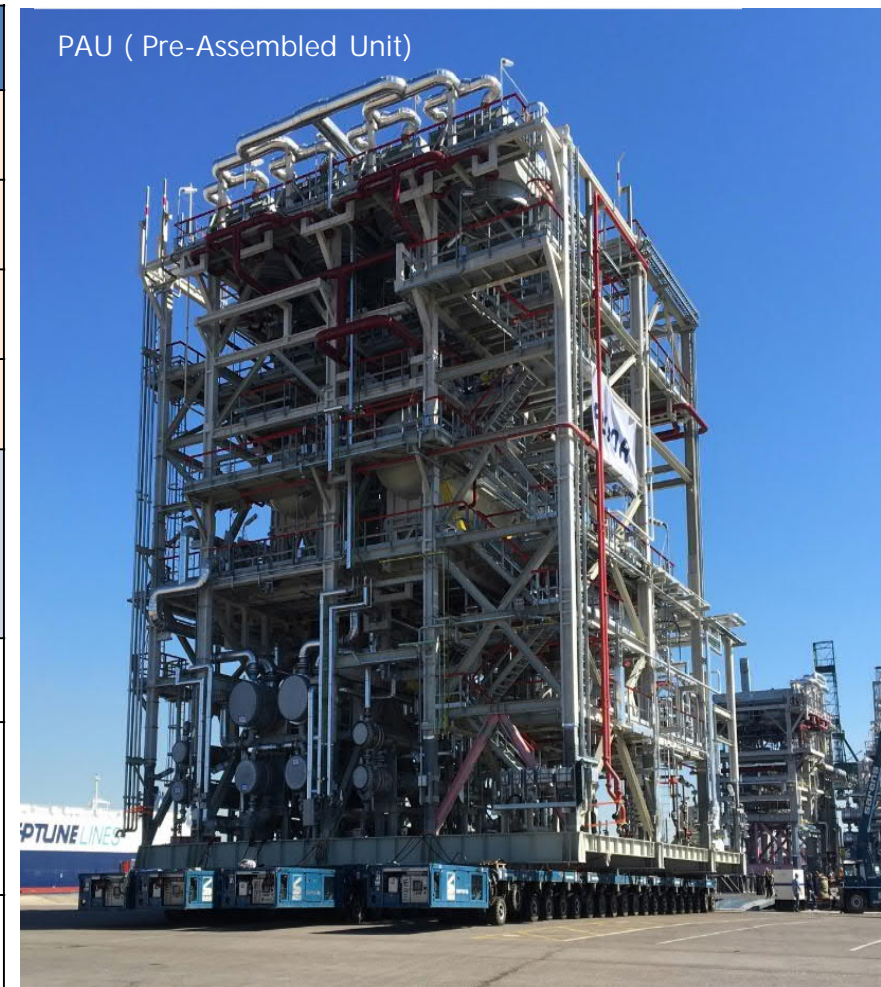


CORE TECHNOLOGY V

Modularization Design

Through our 3D modeling ability, we apply modularization design to oil and gas, power, and energy plants. This improves constructability, project schedule, and purchase order(P/O) for long delivery equipment, resulting in cost savings and shared project risk.

	Contents						Remarks
Exp. Project	Fort Hills Suncor Project, Canada (Apr. '14~Nov.'15)						Modules (PAU 74, PAR 41)
	INEOS PDH Project, Belgium (Jul. '19~Nov. '20)						Modules (PAU 12, PAR 32)
	Lotte LINE Project, Indonesia(Nov.'21 ~ Feb.'24)						Module (PAR 59)
	Ulsan, S-Oil Shaheen Project ('23.03 ~ '26.06)						Module (PAR 44)
Exp. Experts (Person)	Steel	Piping	Mech.	E&I	PM	Total	Experts T/F Team in operation
	12	35	6	18	4	75	
Design ability	1. Basic Concept : Module Plan (Sizing)						PAR, PAU
	2. Detail Design : - Module Lay out & Configuration - SP3D Modeling (Inc. Analysis) - Shop Dwg. Extraction						All discipline
	3. Field Installation Support						COG, Inspection, Test, etc.,



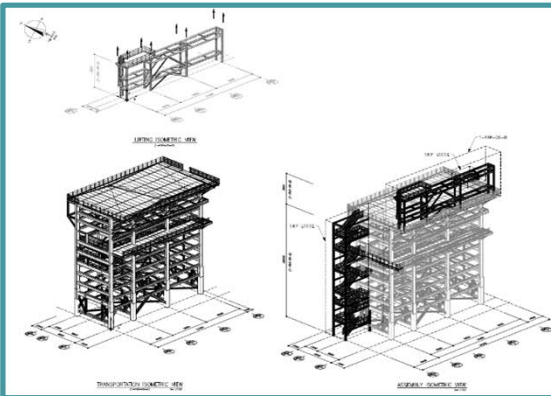
CORE TECHNOLOGY V

Modularization Design

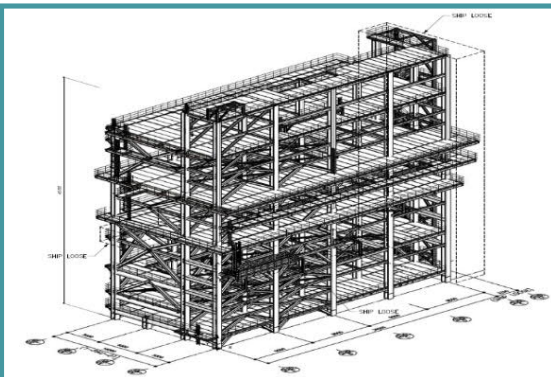
Applicable Modularization

- Process Unit & Package (PAU)
- Main Pipe Rack (PAR)

PAR (Piperack)



PAU (Equipment Structure)



Key Activities

Module design

- PIPING
- Modularization Planning
 - PAR, PAU Layout
 - Temporary Support
- STRUCTURE
- Dynamic Analysis
 - COG design for SPMT
 - Brace Member Connection

E & I

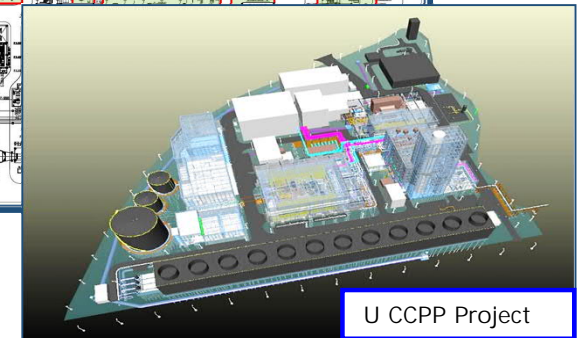
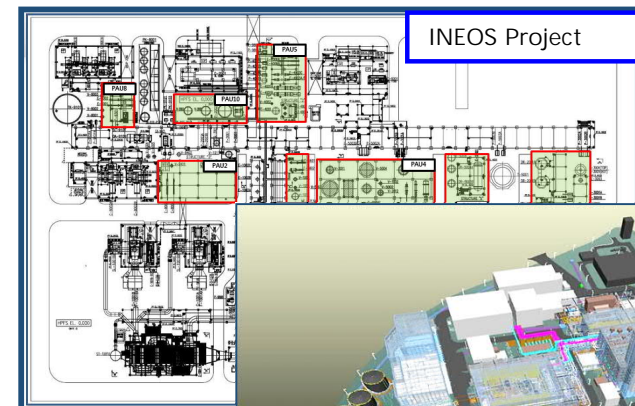
- Cable Tray (Temp. Support)
- Lighting Pole support
- Fixed Support List
- In-Line Instrument List
- Junction Box
- Wiring installation

Fab./Transport./Installation

- SPMT Planning
- Land & Sea Transportation
- Packing & Fastening
- Site Stock
- Test & Inspection
- Erection

◆ Target Goal

- Project Cost Saving
- Project Schedule Control
- Standardization (Design, Const.)
- Early P/O for Long Delivery Items
- Minimize Construction Risk

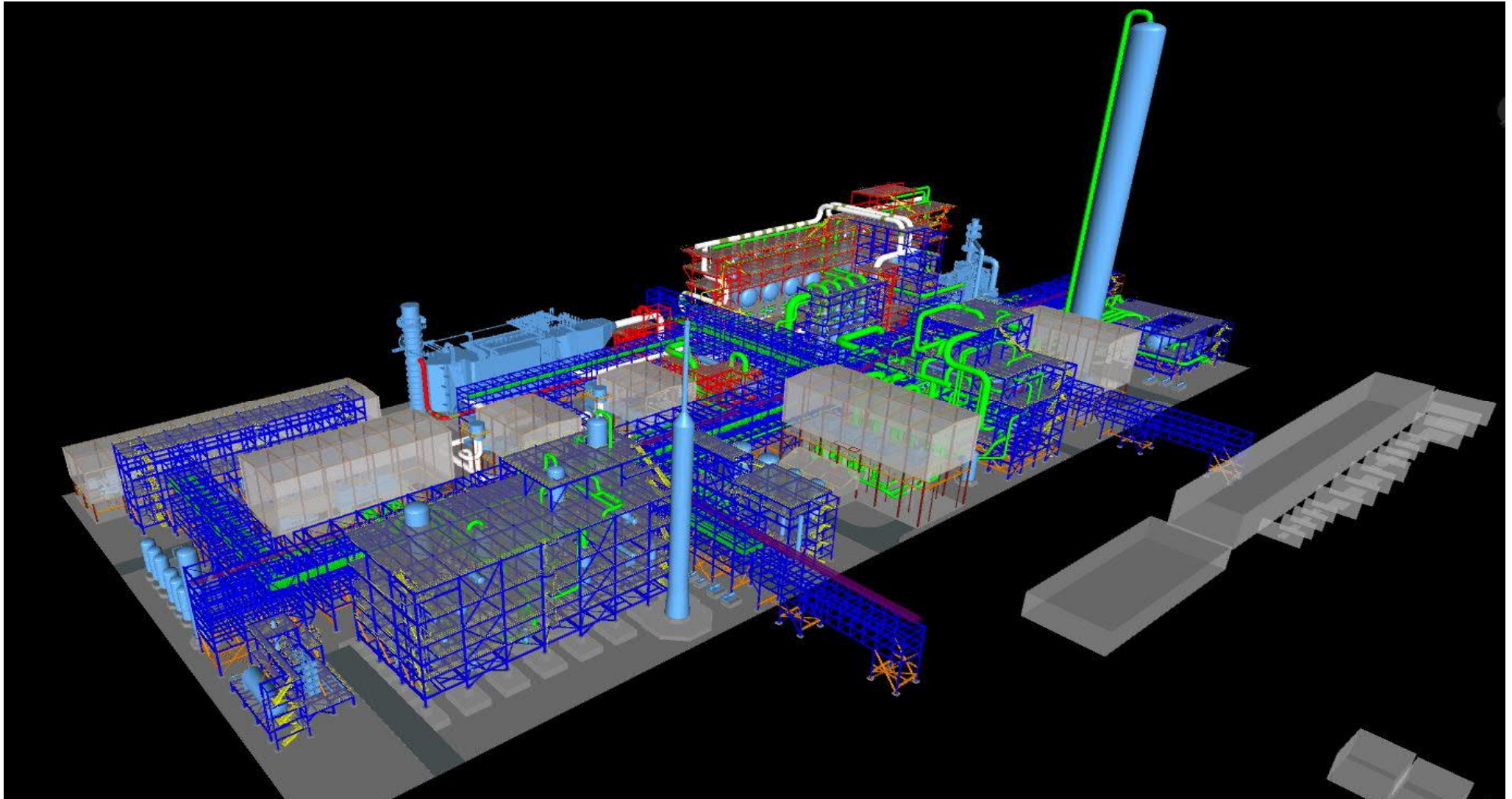


U CCPP Project

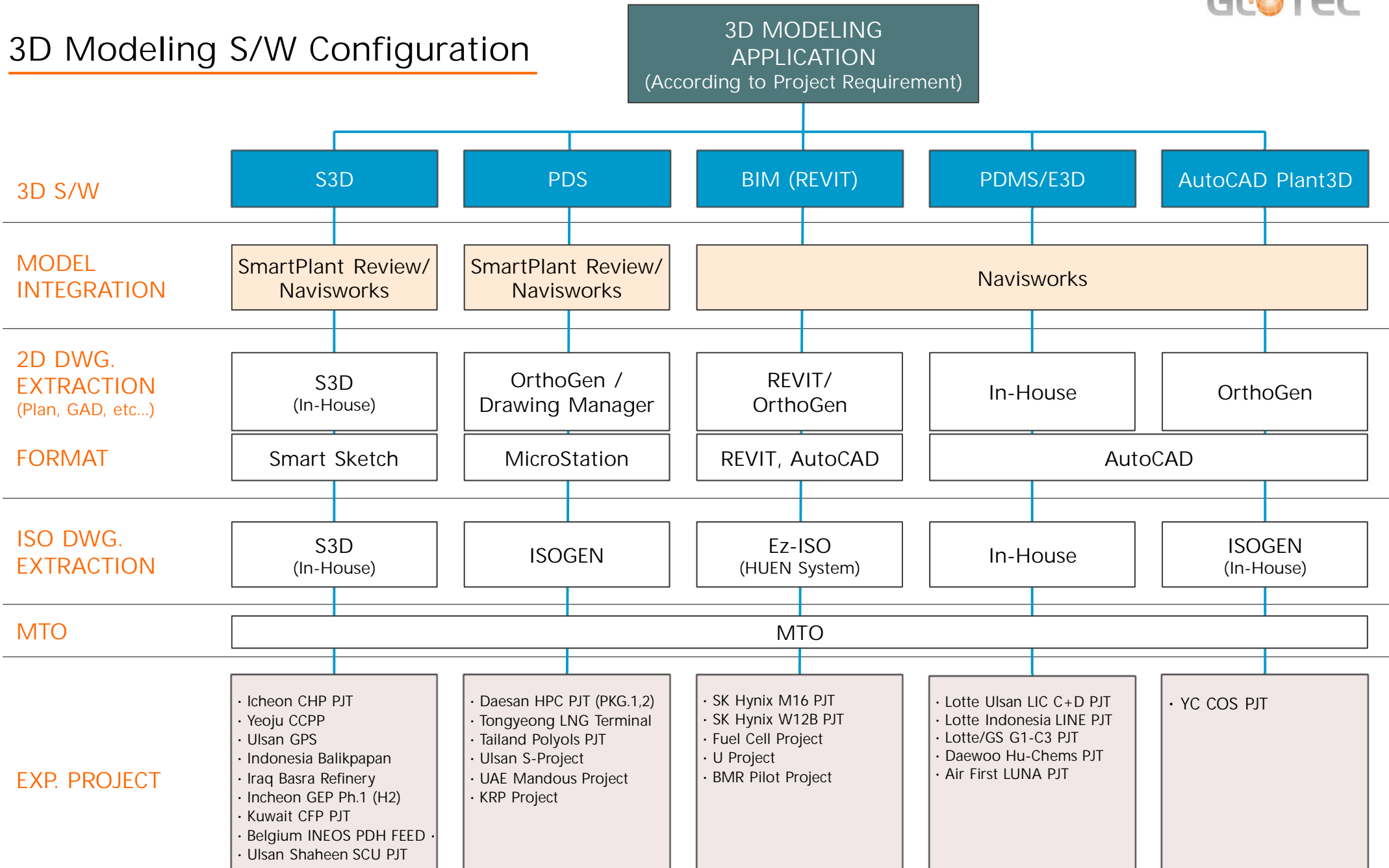
CORE TECHNOLOGY V

Modularization Design

3D Modularization – Belgium INEOS Project



3D Modeling S/W Configuration





BUSINESS

Extensive precision and technology

Glotec Engineering has established a competitive technology in the oil refining, gas processing, petrochemical and industrial plant engineering. It is also delivering top qualified services to our clients ranging from full basic and detail design to procurement and field engineering support.

Oil and Gas

- Refineries
- Oil and Gas Processing
- Petrochemicals
- Liquefied Natural Gas (LNG)

Power Plant

- Coal-fired Generation Plant
- Cogeneration Plant
- Renewable Energy Plant

Industrial Plant

- Semiconductor Plant
- Electronic Plant
- General Industrial Plant

Major Experienced Project Summary

NO	Category	Contractor	Business Sector	Project Name	Location	Client	Period
1	Full Range*	HDEC	Petrochemical	S-Oil Shaheen PKG#1 SCC Project	Korea	ARAMCO (S-Oil)	2023.03 ~ 2026.06
2	Full Range*	DAEWOO E&C	Petrochemical	Yeosu TKG Huchems 6NA/2MNB Project	Korea	TKG Huchems	2022.04 ~ 2024.06
3	Inst./Elec	DL E&C	Petrochemical	Baltic PE, LAO Project	Russia	CNCEC	2022.01 ~ 2025.01
4	Full Range*	SK ecoplant	Power Plant	Icheon Gwan-go Fuel Cell Project	Korea	Korea West Power	2021.12 ~ 2022.10
5	Full Range*	SK ecoengineering	Petrochemical	Boryeong GEP2 Hydrogen FEED Project	Korea	SK E&S	2021.12 ~ 2022.06
6	Full Range*	Lotte E&C	Petrochemical	LOTTE LINE Project	Indonesia	Lotte Chemical	2021.11 ~ 2024.02
7	Full Range*	Wonik Material	Petrochemical	YC O-Chang COS Project	Korea	Wonik Material	2021.08 ~ 2021.12
8	Full Range*	SK ecoplant	Power Plant	Daewon Fuel cells Power Plant(19.8MW)	Korea	Daewon Green Energy	2021.02 ~ 2021.12
9	Full Range*	SK ecoplant	Petrochemical (H2)	Incheon GEP 1 H2 Feed / Detail	Korea	IGE	2021.04 ~ 2021.07
10	Full Range*	SK ecoplant	Power Plant	Ulsan GPS CCPP Power (1,200MW)	Korea	Ulsan GPS	2021.03 ~ 2022.08
11	Full Range*	KOGAS_Tech	LNG	Tongyoung LNG Terminal	Korea	TEP/Hanwha	2021.04 ~ 2024.03
12	Full Range*	Lotte E&C	Petrochemical	Lotte BP C+D Project	Korea	Lotte BP Chem.	2021.02 ~ 2022.10
13	Electric	Hyundai E&C	Refinery	Iraq Barsrah Refinery Upgrading	Iraq	South Refineries Company (SRC)	2021.02 ~ 2023.05
14	Full Range*	SK ecoplant	Industrial	BMR Pilot Plant (Battery Recycle)	Korea	SK Innovation	2020.12 ~ 2021.12
15	Full Range*	SK Energy	Petrochemical	Ulsan, IPA (Iso Propyl Alcohol) FEED	Korea	SKGC	2020.12 ~ 2021.04
16	Full Range	Wonil T&I	Petrochemical	Pyeongteak H2 Supply	Korea	KOGAS	2020.09 ~ 2021.12
17	Full Range*	SK materials	Industrial	Sejong P Project	Korea	SK MR	2020.08 ~ 2021.05

* NOTE : Full range of Design and Engineering service in all disciplines such a Process, Mechanical, Piping, E&I, CSA, HVAC and Fire fighting etc.,

Major Experienced Project Summary

NO	Category	Contractor	Business Sector	Project Name	Location	Client	Period
18	Full Range*	SK ecoplant	Petrochemical	Bukhara Refinery Modernization	Uzbekistan	UOC	2020.08 ~ 2021.05
19	Full Range*	SK ecoplant	Industrial	Icheon M16 Ph-2 W12b Project	Korea	SK Hynix	2020.08 ~ 2022.10
20	Full Range*	SK ecoplant	LNG	Icheon SK Hynix UG LNG Supply	Korea	SK Hynix	2020.06 ~ 2022.10
21	Full Range*	SK ecoplant	Petrochemical	AGIC PDH & complex U&O FEED	Saudi	SK ecoplant	2020.04 ~ 2020.07
22	Full Range*	SK ecoplant	Power Plant	Paju Fuel cells Power Plant(8.1MW)	Korea	Paju Ecoenergy	2020.03 ~ 2020.12
23	DT	SK ecoplant	Power Plant	Yeoju LNG Power (1,000MW, CCPP)	Korea	SK Hynix	2020.01 ~ 2022.08
24	Mech.	Samsung Eng'g	Petrochemical	Sarawak Methanol Project	Malaysia	Sarawak, Malay	2019.12 ~ 2020.03
25	Full Range*	SK ecoplant	Combined Heat Power Plant	Icheon Smart Energy (570MW, CHP)	Korea	SK Hynix	2019.11 ~ 2022.08
26	Full Range*	Lotte E&C	Petrochemical	HPC Project / HDPE & Tankage unit	Daesan, Korea	Hyundai Chem.	2019.07 ~ 2021.12
27	Piping	Hyundai Eng'g	Petrochemical	HPC Project / ECU & DFU unit	Daesan, Korea	Hyundai Chem.	2019.07 ~ 2021.12
28	Full Range*	SK ecoplant	Petrochemical	INEOS PDH FEED Project	Belgium	INEOS	2019.07 ~ 2020.11
29	Process Stress	Hyundai E&C	Petrochemical	Marjan Increment PKG 6	Saudi Arabia	ARAMCO	2019.07 ~ 2022.10
30	Full Range*	SKE / HEC	Refinery	RDMP RU-V Balikpapan Project	Indonesia	PT PERTAMINA	2019.04 ~ 2023.07
31	Piping, Elec., Inst. Civil	SK ecoplant	Revamping	MARS Proposal Project	Thai, Rayong	IRPC	2019.02 ~ 2019.04
32	Full Range*	SK ecoplant	Refinery	Ulsan S - Project	Korea	SK Energy	2018.11 ~ 2020.04
33	Full Range*	SK Innovation	Lithium-ion battery Separator	Jiang-su LIBS Ph-1 Project	China	SK Innovation	2018.10 ~ 2020.12
34	Full Range*	SK ecoplant	Crude Oil Cavern & Pipeline	ADNOC-Mandous Project	UAE	ADNOC	2018.07 ~ 2022.01

* NOTE : Full range of Design and Engineering service in all disciplines such a Process, Mechanical, Piping, E&I, CSA, HVAC and Fire fighting etc.,

Major Experienced Project Summary

NO	Category	Contractor	Business Sector	Project Name	Location	Client	Period
35	Full Range*	SK ecoplant	Petrochemical (PP)	PPTGC Polyols Project	Thai, Rayong	Global Chemical	2018.02 ~ 2020.08
36	Full Range*	SK Innovation	Industrial	LIBS #12,13 PROJECT	Korea	SK Innovation	2018.01 ~ 2019.12
37	Full Range*	LG Chemical	Revamping	Daesan ATS BRU Revamping Project	Korea	LG Chemical	2018.07 ~ 2019.07
38	Full Range*	SK ecoplant	Industrial	Wuxi Hynix Project	Wuxi, China	SK Hynix	2017.01 ~ 2019.01
39	Full Range*	SK ecoplant	Industrial	Jungpyeong LIBS #10, 11 Project	Korea	SK Innovation	2016.08 ~ 2017.12
40	Full Range*	Hyundai Oil bank	Refinery	Daesan Hyundai Oil bank Tank Plant	Korea	Hyundai Oil bank	2016.06 ~ 2019.02
41	Elec. & Inst.	Hyundai Heavy Industrial	Refinery	KIPIC AL-ZOR Project	Kuwait	KNPC	2016.01 ~ 2019.06
42	Full Range*	G-TEC	Gas Terminal	Ghana LPG Gas Terminal Project	Ghana, Africa	Ghana Accra	2015.05 ~ 2020.03
43	Full Range*	SK ecoplant	Refinery	CFP Project	Kuwait	KNPC	2014.07 ~ 2020.12
44	Full Range*	SK ecoplant	Refinery including WWT, Power Plant	KARBALA Refinery Project	Iraq	SCOP	2014.06 ~ 2021.12
45	Full Range*	SK ecoplant	Gas Plant	Ulsan P- Project (PDH)	Korea	SK Gas	2014.01 ~ 2017.11
46	Full Range*	SK ecoplant	Refinery Inc. Power Plant	NSRP Complex Project	Vietnam	NSRP	2013.08 ~ 2016.12
47	Full Range*	SK ecoplant	Petrochemical	Ulsan New PX Project (ISBL, OSBL)	Korea	SK Energy	2012.09 ~ 2014.10
48	Full Range*	Daewoo E&C	Gas Plant	HOUT Onshore Gas Project	Saudi Arabia	KJO (Aramco & KNPC)	2012.05 ~ 2014.03

* NOTE : Full range of Design and Engineering service in all disciplines such a Process, Mechanical, Piping, E&I, CSA, HVAC and Fire fighting etc.,

OIL & GAS

Since Glotec Engineering first entered the oil and gas industry in 2003, we have completed more than 100 projects worldwide and have grown into a full-service of engineering company.

Glotec Engineering has achieved success in petrochemical plant engineering by completing various kinds of large-scale projects, ranging from basic and detail design to field engineering support.

HPC Project (July. 2019 – Dec. 2021)

ECU 800,000 T/Y, HDPE 300,000 T/Y, Tankage, Warehouse / Hyundai Chemical (HEC, LEC)

RDMP RU-V Balikpapan Project (Apr. 2019 – Jul. 2023)

RFCC 90 kBSD, Indonesia/PT PERTAMINA (SKEC)

ADNOC M-Project (Dec. 2017 – Sep. 2019)

Crude oil Cavern, 14,000Mbbbl x 3ea, Fujairah, UAE / ADNOC(SKEC)

1 S Project (Sep. 2017 – Jun. 2019)

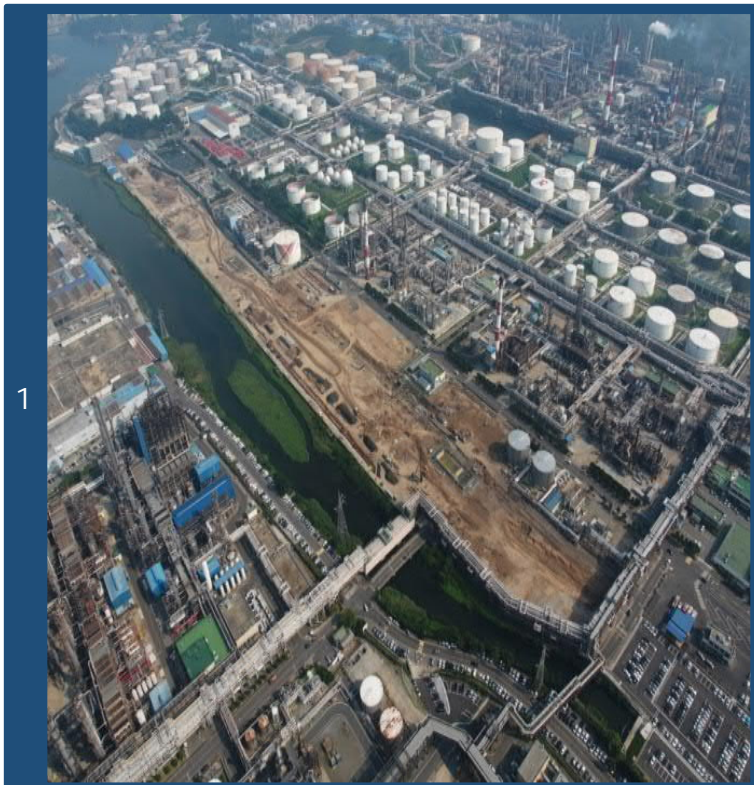
VRDS 30,000 B/D, Ulsan, Korea / SKE(SKEC)

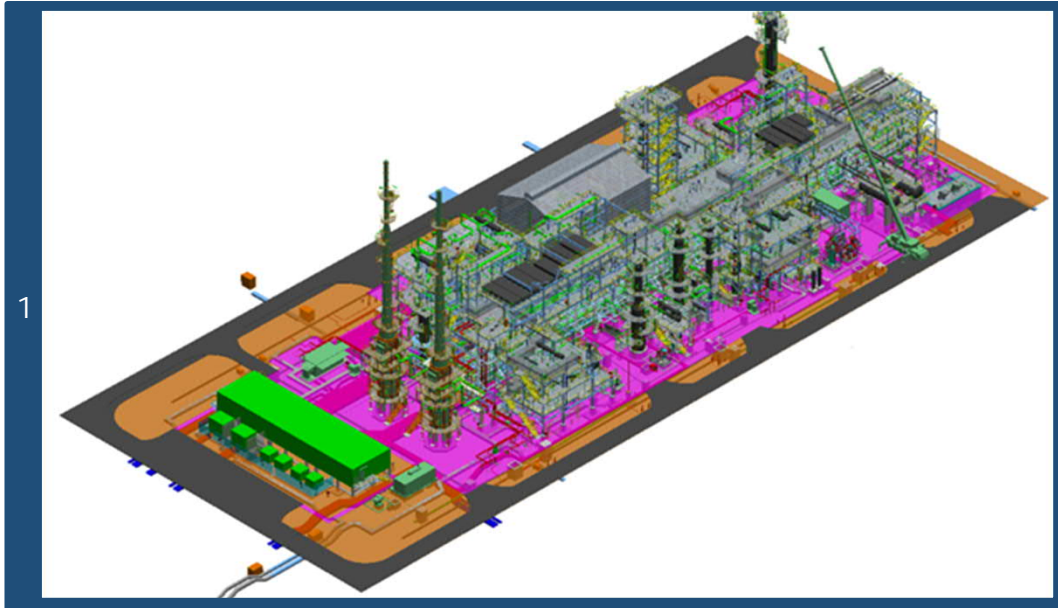
2 ATS Project (Jun. 2018 – Jul. 2019)

Butadiene Rubber Revamping, Daesan, Korea / LG Chemical

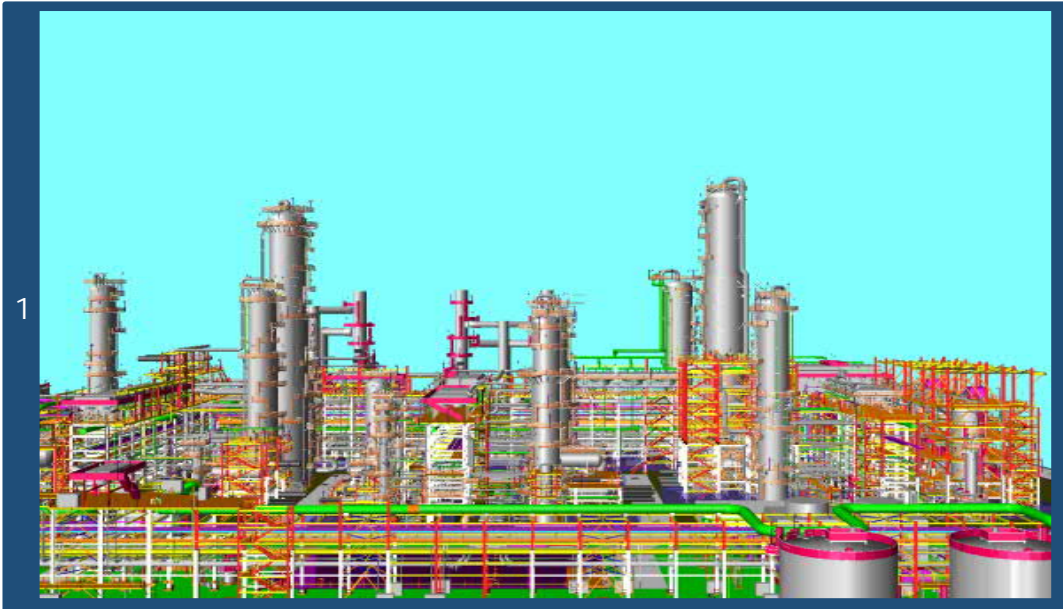
3 Polyols Project (Oct. 2017 – Apr. 2019)

PPTGC Petrochemical, 130,000 T/y, Thailand/ PPTGC(SKEC)





- Al-Zor Refinery Project (Jan. 2016 – Jun. 2019)
Detail for Electric & Instrument, Kuwait / KNPC(HHI)
- 1 CFP Refinery Project (Jul. 2014 – Dec. 2017)
Clean Fuels Refining, Kuwait / KNPC (SKEC)
- 2 P (PDH) Project (Jan. 2014 – Nov. 2015)
Propylene 600,000ton, Ulsan, Korea / SK Gas(SKEC)
- 3 NSRP complex Project (Aug. 2013 – Dec. 2016)
Aromatics and Utility, Nghi Son Refinery, Vietnam / SKEC & JGCS
- JZR & TP Project (Jun. 2012 – Dec. 2017)
J05 Process, J70 P/R, J77 Flare, Saudi Arabia / SKEC & ARAMCO



IRPC UHV Project (Nov. 2012 – Feb. 2014)
Tankage and Utilities, Thailand / SKEC & IRPC

V (V-4) Project (Oct. 2012 – Jun. 2014)
TAU, ORU, SUL process, Ulsan / POSCO ENG.

1 New PX Plant Project (Sep. 2012 – Mar. 2014)
Para-Xylene 1,000Kmta, benzene 600Kmta, WWT, Ulsan / SKEC

HOUT Onshore Gas Project (May. 2012 – Mar. 2015)
Gas process, Flare, Utility, Saudi Arabia / DW E&C

2 V Project (Apr. 2012 – Apr. 2014)
ISBL, OSBL, Utility for Propane & Butane, Incheon / SK Energy(SKEC)

3 WASIT Gas Plant (#1,3,4) Project (Feb. 2011 – Mar. 2014)
Gas Processing, Utility, WWT, Saudi Arabia/ Aramco(SKEC)



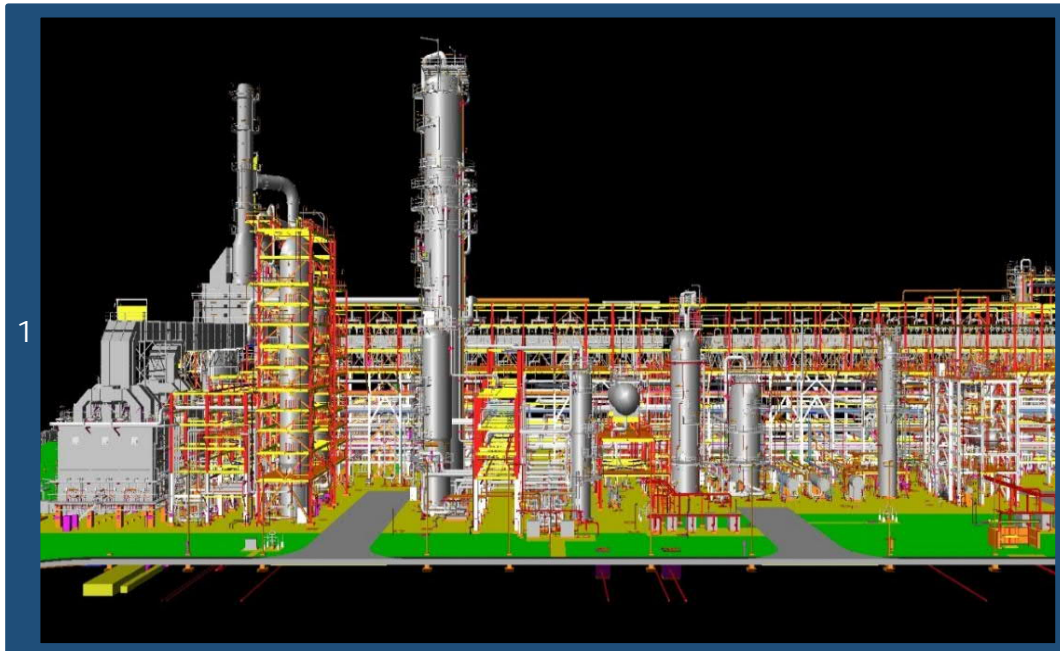
LO Tank Terminal Project (Jan. 2011 – Aug. 2012)
Lube oil for UCO, LBO, HBO, NBO, Ulsan, Korea / SK Gas

1 RRE (Area #1,2,3) Project (Jan. 2010 – Apr. 2013)
Ruwais refinery expansion, 417,000BPSD, UAE/ Takreer (SKEC)

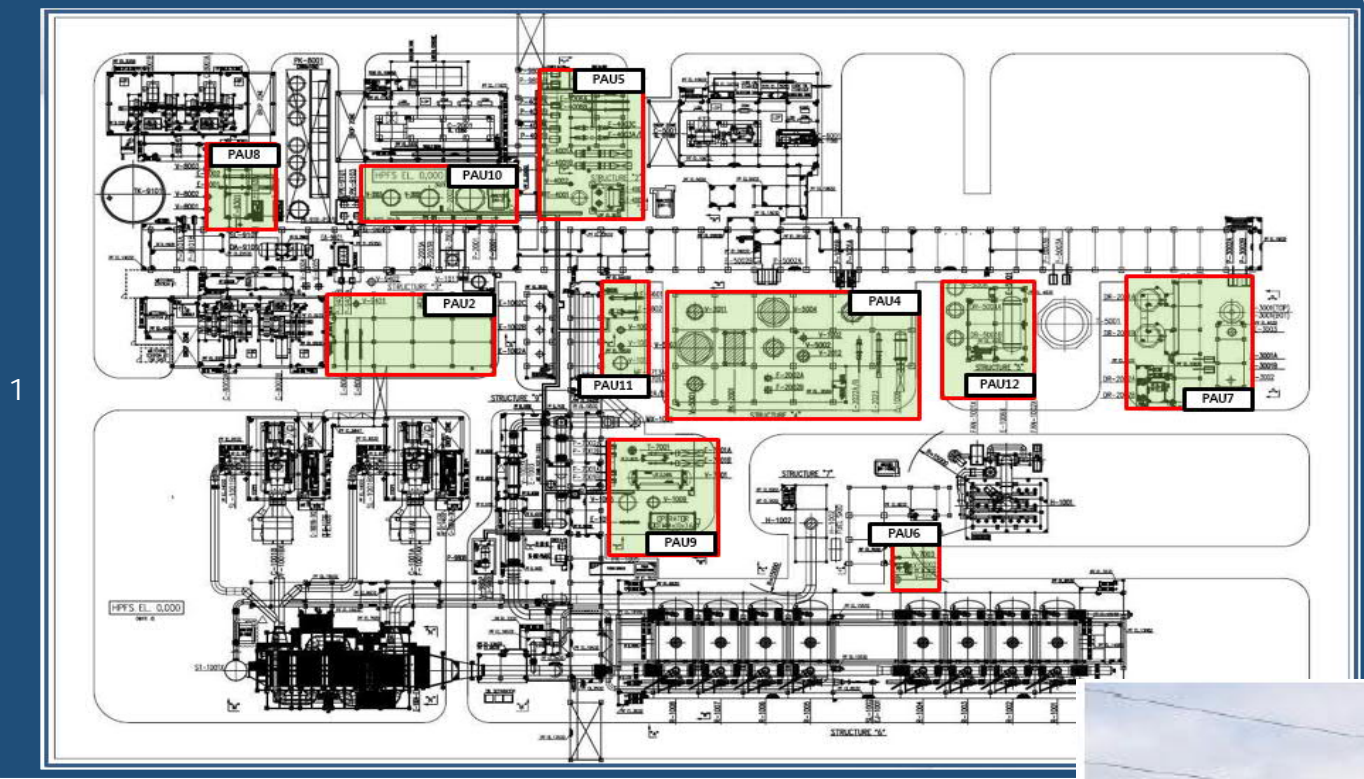
Jubail Export Refinery Project (Oct. 2009 – Sep. 2012)
Utility facilities, Saudi Arabia / SKEC & ARAMCO

2 New FCC Project (Jun. 2006 – May. 2008)
Refinery 60,000 BPSD, Ulsan, Korea / SK Energy (SKEC)

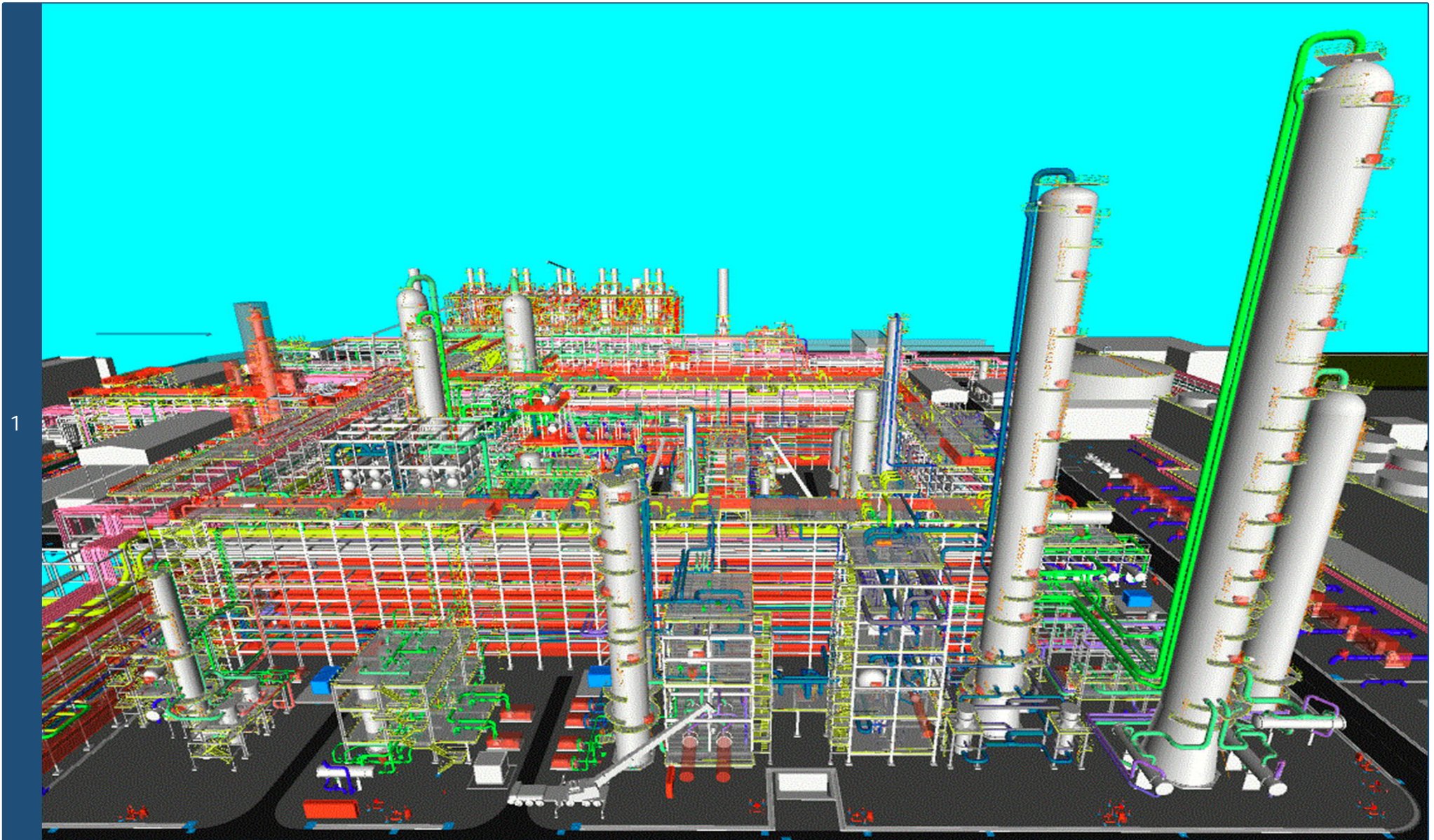
3 RPMAA Project (Jan. 2003 – Oct. 2004)
Gas gathering & Processing, Mina Al Ahmadi, Kuwait / KNPC(SKEC)



1 INEOS PDH FEED Project / Module (Jul. 2019 – Jun. 2020)
750KTA Propane Dehydrogenation Plant FEED, Module Design, Antwerp, Belgium / INEOS(SKEC)



1 S-OIL Shaheen Project / PKG#1 SCC Unit (Mar. 2023 – Jun. 2026)
Steam Cracking Unit, (Ethylene 1800KTA, Propylene 770KTA), Module Design for PAR, Ulsan, Korea / Saudi Aramco (HDEC)



POWER PLANT

Glotec Engineering has successfully conducted a CCPP power plant, incorporating gas turbine and steam turbine generation, power transmission and substation, as well as a renewable energy plant due to our high technical excellence.

- Ulsan SKMU Power Project (Sep. 2022 – Jun. 2025)
 300MW CHP, Ulsan, Korea / SKMU & SKEE
- Ulsan GPS CCPP Power Project (Mar. 2021 – Aug. 2022)
 1,200MW(2+2+1), Ulsan, Korea / SK ecoplant & GPS
- SK Hynix Smart Energy Center CHP Project (Nov.2019 – Aug.2022)
 570MW(1+1+1) Combined Heat Power Plant, Icheon, Korea / SKEC
- Yeosu Natural Gas Power Plant Project (Jan. 2020 – Apr. 2021)
 Power Generation 1,000MW, Yeosu, Korea / SKEC & SK Hynix
- KARBALA Power Plant Project (Jun. 2014 – Apr. 2016)
 Power Generation 30+20MW, Iraq / SKEC & SCOP
- Chile Coal Power Project (Jun. 2008 – Jul. 2011)
 240Mw Coal Power Plant, Chile / HEC
- Hyundai Green Power Project (Oct. 2007 – Dec. 2010)
 400Mw(100Mwx4), Dang-jin, Korea / Daelim E&C



FUEL CELLS

GLOTEC Engineering not only executes numerous fuel cell projects based on advanced BIM technology, ensuring competitiveness, but also continues to grow as a leading engineering company through consistent participation in fuel cell business.

1 Bundang Fuel Cell Power BIM Standardization (Sep.2019 ~ Dec.2019)
- 8MW Fuel Cell (accumulated data standardization), Pilot Modeling

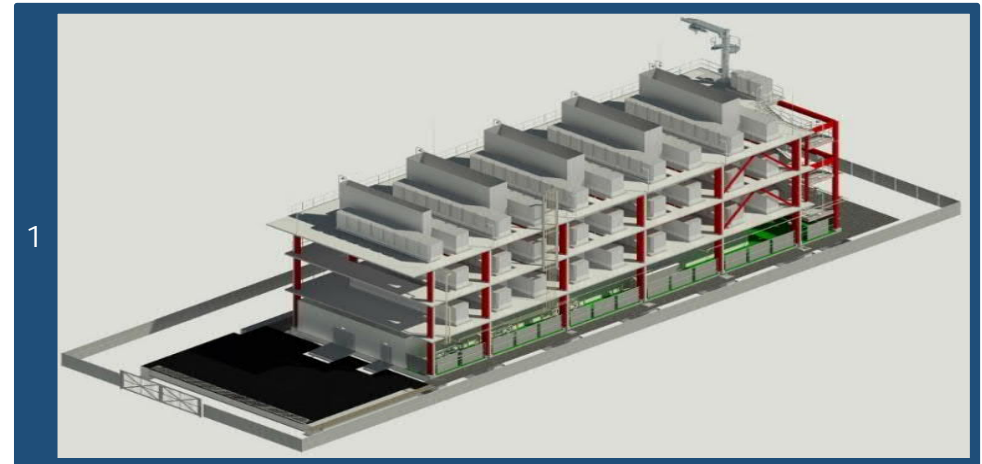
2 Paju Eco Energy Project (Feb. 2020 – Oct. 2020)
- 9.8MW Fuel Cell, Paju, Korea / SKEC

Uiwang Fuel Cell Power Generation Project (Aug. 2020 – Jun. 2021)
- 9.9MW Fuel Cell, Uiwang, Korea / SKEC

3 Honam Fuel Cell Power Generation Project (Sep. 2020 – Sep. 2021)
- 15MW Fuel Cell, Yeosu, Korea / SKEC

Ulsan Daewon Green Energy Project (Oct. 2020 – Aug. 2021)
- 19.8MW Fuel Cell, Ulsan, Korea / SKEC

Paju Eco Energy 2 Stage Project (Dec. 2020 ~ Nov. 2021)
- 16.2MW Fuel Cell, Paju, Korea / SKEC



SEMICONDUCTOR & INDUSTRIAL

Glotec Engineering has carried out industrial plant projects that require high technologies involving semiconductors, lithium-ion battery separators, and ultra-pure water treatment facilities.

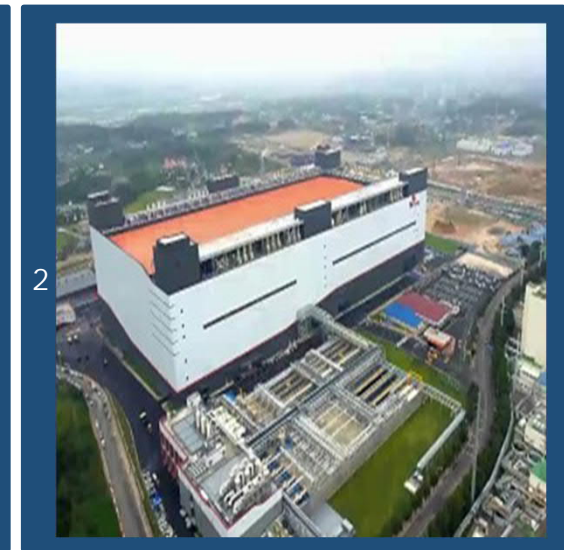
1 'M' China Ph-1 Project (Oct. 2018 – Dec. 2020)
Lithium-ion battery separator, China / SKI

2 LiBS #12, 13 project (Aug. 2017 – Jan. 2019)
Lithium-ion battery separator, Jeung-pyeong, Korea / SKI

3 SK Hynix M15 Ph-2 Project (Aug. 2021 – Dec. 2022)
FAB & Wafer test C/R, UPW, PCW, WWT, Cheongju, Korea/SK Hynix(SKEP)

4 LiBS #10, 11 project (Aug. 2016 – Dec. 2017)
Lithium-ion battery separator, Jeung-pyeong, Korea / SKEC

5 SK Hynix M16 Ph-2 FAB project (May. 2020 – Oct. 2022)
FAB & Wafer test C/R, UT/OS, WWT, Icheon, Korea / SK Hynix (SKEP)



SEMICONDUCTOR & INDUSTRIAL

- Wuxi hynix project (Jan. 2017 – Jan. 2019)
 FAB, Utility facility, CUB, WWT/WT Shop, Clean room extension,
 Total floor space (new) : 294,990 M² (29.49 ha),
 Building area(new) : 93,660 M² (9.36 ha),
 Wuxi, China / SK Hynix (SKEC)



SEMICONDUCTOR & INDUSTRIAL

■ SKMR R&D Center Project (Oct. 2020 – Aug. 2021)

DIW, IA, Scrubber, N₂, Vacuum System, Clean Room, WWT

Total floor space (new) : 8,560 M²

Floor : A/G 5th Floor, U/G 1st Floor

Sejong City, Korea / SK Materials



QUALITY AND VALUE MANAGEMENT

Glotec Engineering aims to enhance design quality and project management in order to minimize errors and maximize customer values.

Quality Control

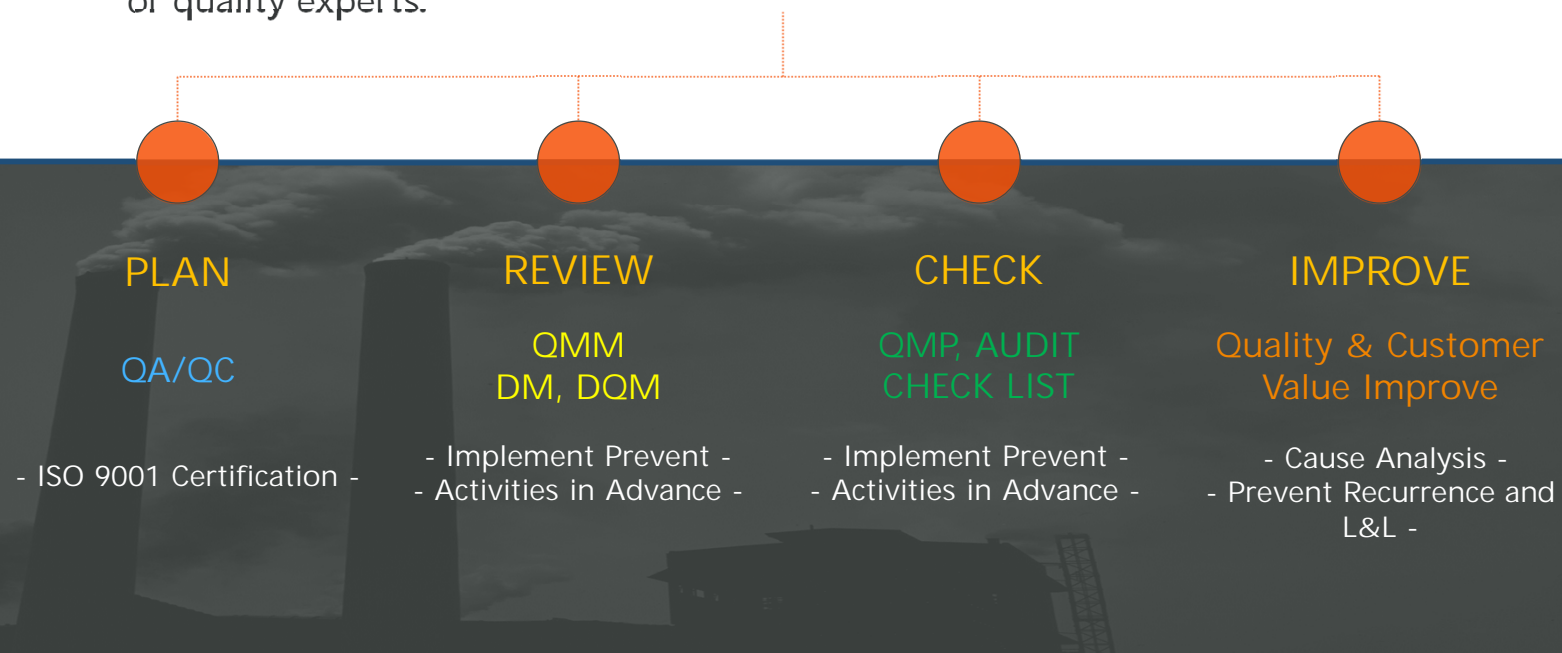
Since 2009, Glotec Engineering has been certified for ISO 9001 quality management and implements faultless quality management and control assurance in all projects.

It strives to achieve zero-defect design by ensuring quality control at each step of the work process, and it provides field engineering support through a team of quality experts.



Certifications

- ISO 9001 : 2015 /renewal
- Registered at International contractors association of Korea
- Registered at Korea engineering and consulting association



DESIGN SOFTWARE & TOOLS

Glotec Engineering provides optimal design and engineering tools, including the latest design software. We use up-to-date techniques such as concurrent 3D modeling for improved accuracy.



COMMON

- AUTO CAD ADT Network Version
- PDMS, PDS/Micro-Station,
- SP-3D, BIM (RAVIT),
- SPR (Smart Plant Review)

PROCESS

- ASPEN HYSYS : Process Simulation
- HTRI : Thermal Rating

MECHANICAL

- Compress : Tower / Vessel Strength calculation
- B-JAC : Heat exchanger calculation

PIPING

- CAESAR II : Piping Stress Analysis
- EZ - ISO & GTX Image CAD

ELECTRICAL

- SPEL : Smart Plant / Electrical
- ETAP : Electrical transient analysis program

INSTRUMENT

- Intools : Instrument data base & design
- SPI : Smart Plant / Instrumentation

CIVIL STRUCTURE

- SAP2000 : Finite Element Analysis of Structures
- STADD Pro : Finite Element Analysis of Structures
- MIDAS GEN : Finite Element Analysis of Structures
- InLOAD : Site Grading
- iAFES : Foundation Analysis
- PEDAS : Foundation Analysis
- TEKLA : 3D Modeling

Business license	Declaration of engineering business	Certificate of membership (Korea Plant Industries Association)																																				
<div data-bbox="100 367 739 1372"> <p style="text-align: center;">사업자등록증 (법인사업자) 등록번호 : 108-81-59497</p> <p>법인명 (단체명) : (주) 글로텍엔지니어링 대표자 : 김균</p> <p>개업연월일 : 2003년 03월 07일 법인등록번호 : 110111-2733213 사업장소재지 : 서울특별시 금천구 가산디지털1로 171, 12층 1201호-1218호, 13층 1301호-1318호(가산동, 가산 에스케이 브이원 센터) 본점소재지 : 서울특별시 금천구 가산디지털1로 171, 12층 1201호-1218호, 13층 1301호-1318호(가산동, 가산 에스케이 브이원 센터) 사업의종류 : 일반 서비스 중대 컴퓨터엔지니어링, 소방시설설계업(전기기계) 컴퓨터프로그래밍 및 시스템 통합구축</p> <p>발급사유 : 정정</p> <p>사업자 단위 과세 적용사업자 여부 : 여(√) 부() (적용일자: 2019년 11월 07일) 전자세금계산서 전용 전자우편주소 :</p> <p style="text-align: right;">2020년 04월 24일 금천세무서장</p> </div>	<div data-bbox="784 383 1433 1356"> <p style="text-align: right;">발급번호 : 20240822-SG-0000306189</p> <p style="text-align: center;">엔지니어링사업자 신고증</p> <table border="1"> <tr> <td>명칭</td> <td colspan="3">(주)글로텍엔지니어링</td> </tr> <tr> <td>대표자성명</td> <td>김균</td> <td>생년월일</td> <td>1961.11.05</td> </tr> <tr> <td>소재지</td> <td>서울특별시 금천구 가산디지털1로 171 가산 에스케이 브이원센터 12,13층</td> <td>전화번호 (FAX,E-Mail)</td> <td>02-6345-7000 02-6345-7040</td> </tr> <tr> <td rowspan="3">엔지니어링업</td> <td>신고번호</td> <td colspan="2">계 E-01-000259 호</td> </tr> <tr> <td>기술부문</td> <td>화학 등</td> <td>8 개 부문</td> </tr> <tr> <td>전문분야</td> <td>항공 등</td> <td>17 개 분야</td> </tr> <tr> <td rowspan="3">엔지니어링 건설업</td> <td>신고번호</td> <td colspan="2"></td> </tr> <tr> <td>기술부문</td> <td>등</td> <td>개 부문</td> </tr> <tr> <td>전문분야</td> <td>등</td> <td>개 분야</td> </tr> <tr> <td>신고연월일</td> <td colspan="3">2008-12-17</td> </tr> </table> <p>「엔지니어링산업 진흥법」 제21조제1항 및 같은 법 시행규칙 제7조에 따라 위와 같이 신고하였음을 증명합니다.</p> <p style="text-align: center;">2024년 08월 22일 한국엔지니어링협회장</p> <p><small>본 확인서는 한국엔지니어링협회(http://www.ettis.or.kr)에서 발급된 증명서로 우측상단의 발급번호를 이용하여 문서의 발급여부를 확인 할 수 있으며, 진위여부는 웹사이트 MaSmartDetector(MarAny, 마크애니) 검증 어플리케이션으로 확인할 수 있습니다.</small></p> </div>	명칭	(주)글로텍엔지니어링			대표자성명	김균	생년월일	1961.11.05	소재지	서울특별시 금천구 가산디지털1로 171 가산 에스케이 브이원센터 12,13층	전화번호 (FAX,E-Mail)	02-6345-7000 02-6345-7040	엔지니어링업	신고번호	계 E-01-000259 호		기술부문	화학 등	8 개 부문	전문분야	항공 등	17 개 분야	엔지니어링 건설업	신고번호			기술부문	등	개 부문	전문분야	등	개 분야	신고연월일	2008-12-17			<div data-bbox="1478 367 2128 1372"> <p style="text-align: center;">회원증</p> <p>회원번호: 플협 제 19-417호 Register No.</p> <p>업체명: (주)글로텍엔지니어링 / Glotec Engineering co., Ltd Name of Member</p> <p>대표자: 김 균 / Kim Gyun President</p> <p>상기 업체는 본회 회원이므로 이 증서를 드립니다. The membership is granted in accordance with the act and articles of this association.</p> <p style="text-align: right;">2019년 06월 14일 한국플랜트산업협회장</p> </div>
명칭	(주)글로텍엔지니어링																																					
대표자성명	김균	생년월일	1961.11.05																																			
소재지	서울특별시 금천구 가산디지털1로 171 가산 에스케이 브이원센터 12,13층	전화번호 (FAX,E-Mail)	02-6345-7000 02-6345-7040																																			
엔지니어링업	신고번호	계 E-01-000259 호																																				
	기술부문	화학 등	8 개 부문																																			
	전문분야	항공 등	17 개 분야																																			
엔지니어링 건설업	신고번호																																					
	기술부문	등	개 부문																																			
	전문분야	등	개 분야																																			
신고연월일	2008-12-17																																					

Certification of international contractor

KS Q ISO 9001

Certificate of R&D center

■ 해외건설촉진법 시행규칙 [별지 제3호서식] <개정 2014. 2. 14> (양쪽)

제 645 호
No. 645

해외건설업 신고확인증 (Certification of International Contractor)

상 호 : (주)글로벌엔지니어링
(Name of Company)

대 표 자 : 김균
(Name of Company Representative)

법 인 등 록 번 호 (생 년 월 일) : [110111-2733213]
[Corporation registration number(date of Birth)]

신 고 업 종 : 건설엔지니어링업
(Type of Business) (Engineering)

주된 사무소의 소재지 : 서울특별시 금천구 가산디지털1로 171, 12층13층
(Address of Company) (가산동, 가산에스케이브이원센터)
(171 Gasan digital 1-ro, Geumcheon-gu, Seoul, Korea)

「해외건설촉진법」 제6조 제1항에 따라 해외건설업의 신고를 하였음을 증명합니다.
This is to certify that the above mentioned company is an enrolled international contractor in compliance with Clause 1 under Article 6 of Overseas Construction Promotion Act.

2011년 03월 11일

해외건설협회장
(Chairman of International Contractors Association of Korea)

해 외 건 설 협 회 장
210mmx297mm [포스트용지(1종) 120g/㎡]
해외건설업신고사항(상호, 대표자, 영업소소재지)이 변경된 경우
사용발생일로부터 30일 이내 반드시 변경신고를 하시기 바랍니다.



Registration no.	KQ 091243	IAF Code	34
First issue date	2009-12-21	Issue date	2021-12-21
Expiry date	2024-12-20	Reissue date	2021-12-17

Quality Management System Certificate
KS Q ISO 9001:2015/ISO 9001:2015

We certify that the Quality Management System of the Organization:
Glotec Engineering Co., Ltd.

Is in compliance with the standard KS Q ISO 9001:2015/ISO 9001:2015 for the following products/services:

Design, development and engineering service of civil, building, plant(refinery, petrochemistry, general chemistry, power plant, environmental and industrial equipment) at overseas and domestic site and electrical works

General Manager
Seung-Chan Lee

Maintenance of the certification is subject to continual surveillance audit and dependent upon the observance of Kiwa Korea's certification criteria.

Certified Sites
12~13 F. Gasan SK V1center, 171, Gasan digital 1-ro, Geumcheon-gu, Seoul, Korea



[문서번호: vlpB-mmAN-OfCB-cYLy] [발급일자: 2018년 10월 31일]

제 2012112475 호

기업부설연구소 인정서

- 연 구 소 명: (주)글로벌엔지니어링 R&D Center
[소속기업명: (주)글로벌엔지니어링]
- 소 재 지: 서울특별시 금천구 가산디지털1로 171
1201호 - 1218호 (가산동) 회실 중 1218호 위치
- 신고 연월일: 2018년 10월 29일
(최초인정일: 2012년 8월 17일)
* 변경내역: 소재지 변경





과학기술정보통신부

「기초연구진흥 및 기술개발지원에 관한 법률」 제14조의 2제1항 및 같은 법 시행령 제27조제1항에 따라 위와 같이 기업부설연구소로 인정합니다.

2018년 10월 30일

한국산업기술진흥협회장

한국산업기술진흥협회에서 발급되었으며 *http://WWW.RND.ORG.KR*에서 "본서번호"를 입력하면 원본과도 일치 여부를 확인할 수 있습니다.

Construction technical consultancy license	Certification of licensed architect	Firefighting supervision license															
<p style="text-align: right; font-size: small;">민원담당관 김은숙, 2024-05-24 11:39:29</p> <div style="text-align: center;">  <p>등록번호 : 서울-2-653호</p> <h2 style="margin: 0;">건설엔지니어링업 등록증</h2> <p>상호 또는 법인명 : (주)글로벌엔지니어링</p> <p>영업소의 소재지 : 서울특별시 금천구 가산디지털1로 171, 12층 1201-1218호 13층 1301호~1318호(가산동, 가산 에스케이 브이원 센터)</p> <p>소속 국가명 : 대한민국</p> <p>성명 (대표자) : 김균 생년월일 : 1961년 11월 05일</p> <p>전문분야(세부분야) : 설계·사업관리 (일반)</p> <p>등록연월일 : 2020년 06월 10일</p> <p>「건설기술 진흥법」 제26조제1항에 따라 건설엔지니어링사업자로 등록하였음을 증명합니다.</p> <p style="text-align: right;">2024년 5월 24일</p> <div style="display: flex; justify-content: center; align-items: center;"> 서울특별시  </div> <p style="font-size: 8px; margin-top: 20px;">이 문서는 서명자의 승인없이 수정할 수 없습니다.</p> </div>	<p style="text-align: right; font-size: small;">(일 쪽)</p> <p>■ 건축사법 시행규칙[별지 제39호서식] <개정 2020. 6. 18></p> <p>제 2022-금천구-엔지니어링사업자소속건축사-2 호</p> <p><input checked="" type="checkbox"/> 엔지니어링사업자 소속 건축사 신고확인증 <input type="checkbox"/> 건설사업자 소속 건축사 신고확인증</p> <table border="1" style="width: 100%; border-collapse: collapse;"> <tr> <td style="width: 20%;">상호 또는 명칭</td> <td colspan="3">(주)글로벌엔지니어링</td> </tr> <tr> <td>소재지</td> <td colspan="3">서울특별시 금천구 가산디지털1로 171 SKV1센터 12-13층</td> </tr> <tr> <td rowspan="2">신고인 (건축사)</td> <td>성명</td> <td>생년월일</td> <td>19년 월 일</td> </tr> <tr> <td>황순태</td> <td>자격번호</td> <td>제 6521호</td> </tr> </table> <p><input checked="" type="checkbox"/> 「엔지니어링산업 진흥법」 제21조제1항에 따라 신고한 엔지니어링사업자 위 건축사는</p> <p><input type="checkbox"/> 「건설산업기본법」 제2조제7호에 따른 건설사업자</p> <p>에 소속한 건축사로서 「건축사법 시행규칙」 제16조1항에 따라 신고를 하였음을 확인합니다.</p> <p style="text-align: right;">2022년08월01일</p> <div style="display: flex; justify-content: center; align-items: center;"> 서울특별시  </div> <p style="text-align: center; margin-top: 5px;">서울특별시 금천구청장 (인)</p> <p style="font-size: 8px; margin-top: 20px;">210mm× 297mm(보존용지(1종) 120g/㎡)</p>	상호 또는 명칭	(주)글로벌엔지니어링			소재지	서울특별시 금천구 가산디지털1로 171 SKV1센터 12-13층			신고인 (건축사)	성명	생년월일	19년 월 일	황순태	자격번호	제 6521호	<p style="text-align: center;">제 2020-01-00060 호</p> <h2 style="text-align: center; margin: 0;">소방시설업 등록증</h2> <p>업종 : 일반소방시설설계업(전기,기계)</p> <p>상호(명칭) : 주식회사 글로벌엔지니어링</p> <p>대표자 : 김균 생년월일 : 1961년 11월 05일</p> <p>영업소 소재지 : 서울특별시 금천구 가산디지털1로 171, 12층 1201호~1218호, 13층 1301호~1318호(가산동, 가산 에스케이 브이원 센터)</p> <p>「소방시설공사업법」 제4조 제1항에 따라 소방시설설계업이 위와 같이 등록되었음을 증명합니다.</p> <p style="text-align: right;">2020년 4월 17일</p> <div style="display: flex; justify-content: center; align-items: center;"> 서울특별시  </div>
상호 또는 명칭	(주)글로벌엔지니어링																
소재지	서울특별시 금천구 가산디지털1로 171 SKV1센터 12-13층																
신고인 (건축사)	성명	생년월일	19년 월 일														
	황순태	자격번호	제 6521호														

License of Elec. Power Design & Engineering	Certification of Excellent ESG	Certified as a Main-Biz Company from Korean Ministry of SMEs
<div data-bbox="107 395 257 427">제 서울E-2-585호</div>  <h2 style="text-align: center;">설 계 업 등 록 증</h2> <ul style="list-style-type: none"> ○ 회 사 명 : (주)글로벌엔지니어링 ○ 소 재 지 : 서울시 금천구 가산디지털1로 171, 12층, 13층 (가산동, 가산에스케이브이원센터) ○ 대 표 자 명 : 김균 ○ 법인등록번호 : 110111-2733213 ○ 설계업의종류 : 전문1종 설계업 ○ 등록연월일 : 2022년 5월 20일 ○ 영 업 범 위 : 전력시설물의 설계도서 작성 <p>「전력기술관리법」 제14조 제1항 같은 법 시행규칙 제25조 제3항에 따라 설계업 등록을 하였음을 증명합니다.</p> <p style="text-align: right;">2022년 5월 20일</p> <p style="text-align: center;">서울특별시 </p>		

The Family-Friendly Certification by Korean Government


제2024-0140호

가족친화인증서

기업명 : (주)글로벌엔지니어링
소재지 : 서울특별시 금천구 가산디지털1로 171 (가산동) 1201-1218,1301-1318, 12층,
유효기간 : 2024.12.01~2027.11.30

위 기업은 「가족친화 사회환경의 조성 촉진에 관한 법률」 제15조 제1항에 따라 우수한 가족친화경영 운영체제를 구축하고 가족친화제도를 운영함으로써 근로자의 일·생활 균형을 지원하고 국가경쟁력 향상에 기여하였기에 가족친화기업으로 인증합니다.

2024년 12월 01일



여성가족부장관

Company Credit Rating

I. CREDIT RATING (주)글로벌엔지니어링 | 108-81-59497 | ECC202404007007

기업정보

기업명	(주)글로벌엔지니어링 (Glotec Engineering Co.,Ltd.)		
사업자번호	108-81-59497	법인번호	110111-273213
대표자	김군	설립일자	2003.03.07
산업분류	(M72129) 기타 엔지니어링 서비스업		
본사 주소	[08503] 서울특별시 금천구 가산디지털1로 171, 12층 1201호~1218호,13층 1301호~1318호(가산동)		
결산기준일	2023.12.31	신용등급 유효기간	2024.04.15 ~ 2025.04.14

주요 신용정보

DNA 신용등급	현금흐름등급	WATCH 등급
BBB+	A	정상
평가 기준일: 2024.04.15	평가 기준일: 2024.04.15	평가 기준일: 2024.04.14

신용등급 분포



현금흐름등급 분포



결산 기준일	정기 평가			하반기 평가		
	평가일	신용등급	현금흐름등급	평가일	신용등급	현금흐름등급
2023.12.31	2024.04.15	BBB+	A	-	-	-
2022.12.31	2023.04.14	BBB+	A	2023.09.05	BBB+	A
2021.12.31	2022.04.12	BBB+	C+	2022.08.31	BBB+	C+

주요 재무 현황 (단위: 백만 원)

결산 기준일	총자산	부채총계	자본총계	매출액	영업이익	당기순이익
2023.12.31	65,037	42,111	22,925	57,701	2,035	1,657

■ Report of E-Credible (2024)

- Credit Rating : BBB+
- Watch Rating : Normal

(Based on Apr. 14th , 2024)

The Silver Tower Order of Industrial Service Merit from Korean Government

제 1794 호

훈장증

주글로벌엔지니어링
대표이사 김군

귀하는 엔지니어링산업 진흥을 통하여 국가 산업 발전에 이바지한 공로가 크므로 대한민국 헌법에 따라 다음 훈장을 수여합니다.


은탑산업훈장

2023년 6월 2일

대통령 윤석열

국무총리 한덕수

이 증을 산업훈장부에 기재합니다.
행정안전부장관 한창림
직무대행 차관


※ Great Culture Built with our Customers



We, Glotec Engineering, aim to cultivate a customer-centered corporate culture where we prioritize our customers and employees.



SUSTAINABLE GROWTH

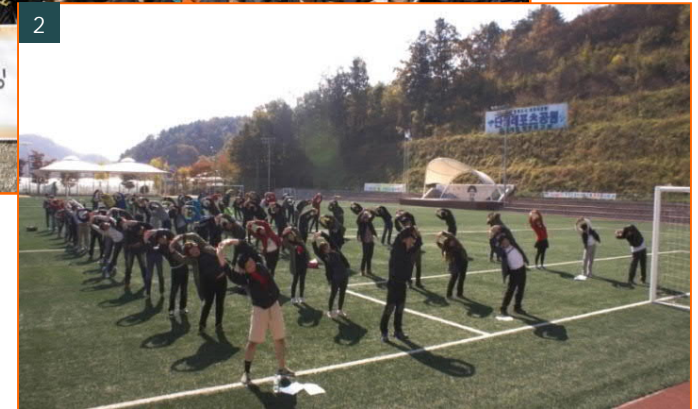
Glotec engineering pursues sustainable growth through a strong corporate culture that values its customers and creates a great workplace and quality of life for all.



- 1 Received the Presidential Commendation for Korea Engineering and Consulting Association (Oct. 2013)
- 2 Received the Silver Tower Order of Industrial Service Merit from Korean government. (June. 2023)
- 3 Technical Service (MOU) signing ceremony (July. 2020 Korea Gas Technology Corporation)

SUSTAINABLE GROWTH

- 1 An outdoor activity like a hiking to communicate closely. (April, 2010)
- 2 Strengthened the teamwork through the company track meet. (October, 2013)
- 3 Promoted strong fellowship in the year-end party. (December, 2013)
- 4 Event for the 15th anniversary of the founding. (May, 2018)



CHALLENGE AND ACHIEVEMENT

With our challenge, innovation and passion,
we are creating a better world, better future.

